

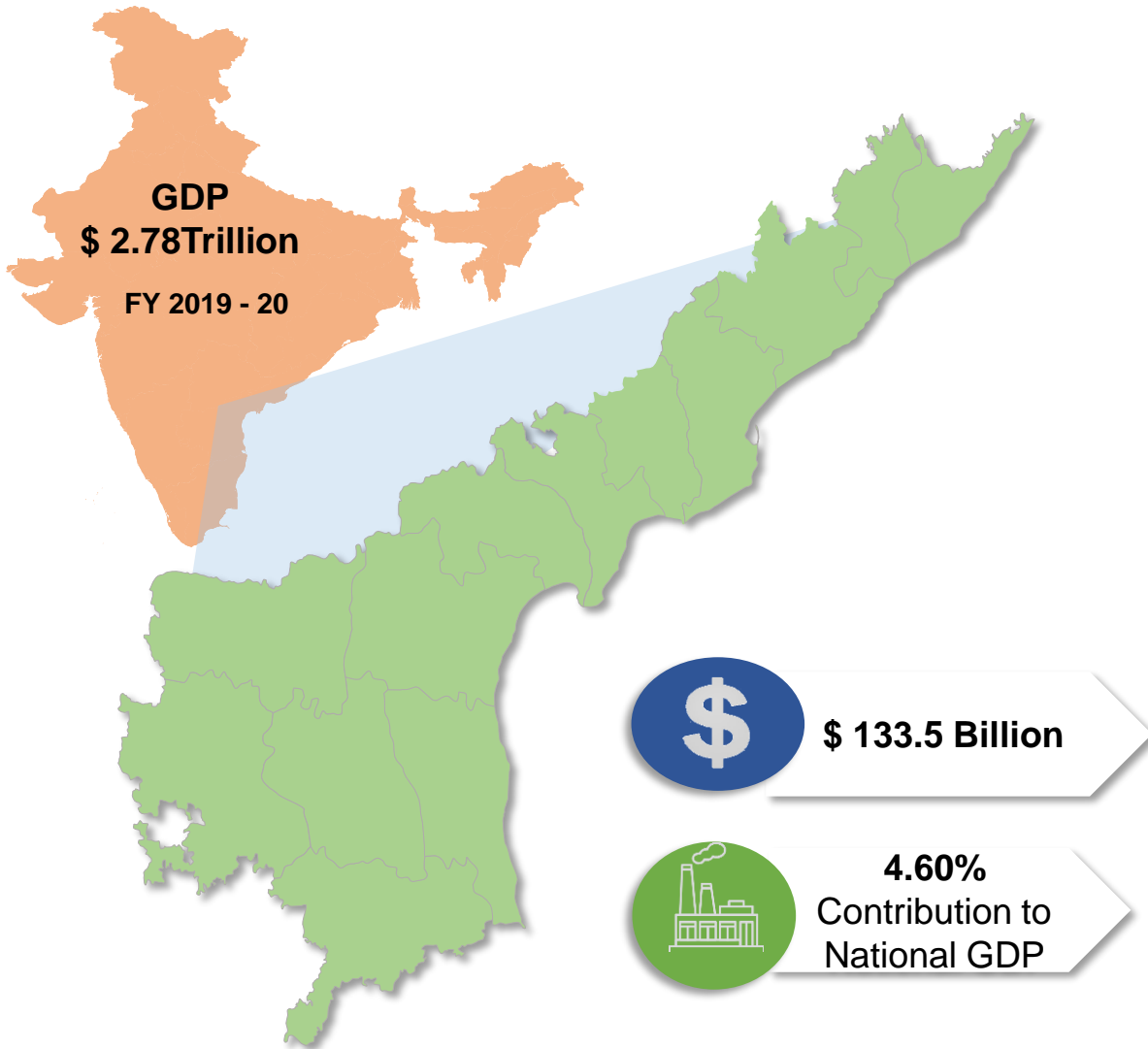
**Sri Y.S. JAGANMOHAN REDDY**  
Hon'ble Chief Minister,  
Government Of Andhra Pradesh

## 2 Years of Progress: Our Report Card

DEPARTMENT(S) OF  
INDUSTRIES, INFRASTRUCTURE, INVESTMENTS & COMMERCE,  
INFORMATION TECHNOLOGY, SKILL DEVELOPMENT & TRAINING,  
GOVT OF ANDHRA PRADESH.



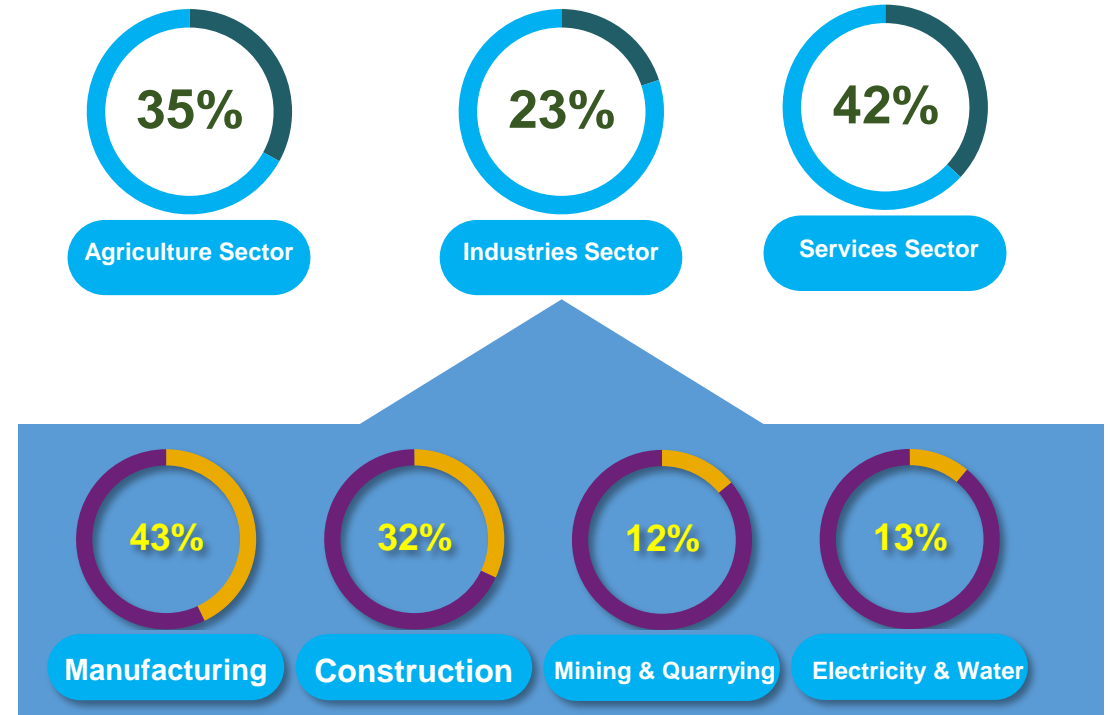
# AP Contributes Around 4.6% to National GDP



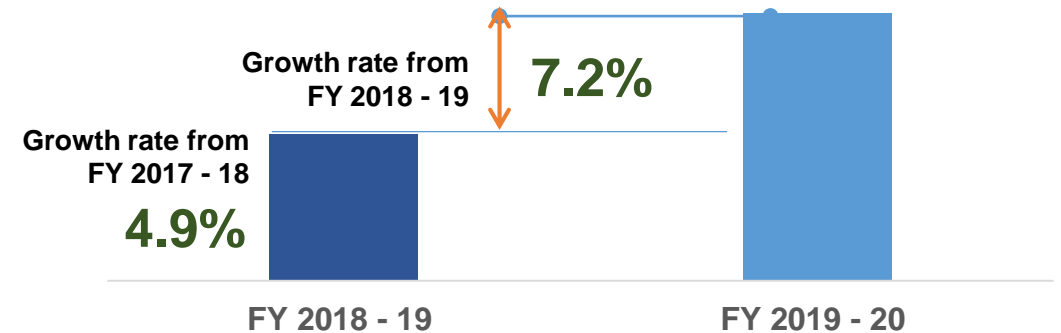
Country GDP (INR lakh Cr) - **203.5**  
State GDP (INR lakh Cr) - **9.7**

Data from MOSPI 31<sup>st</sup> May 21

## Gross State Domestic Product Distribution



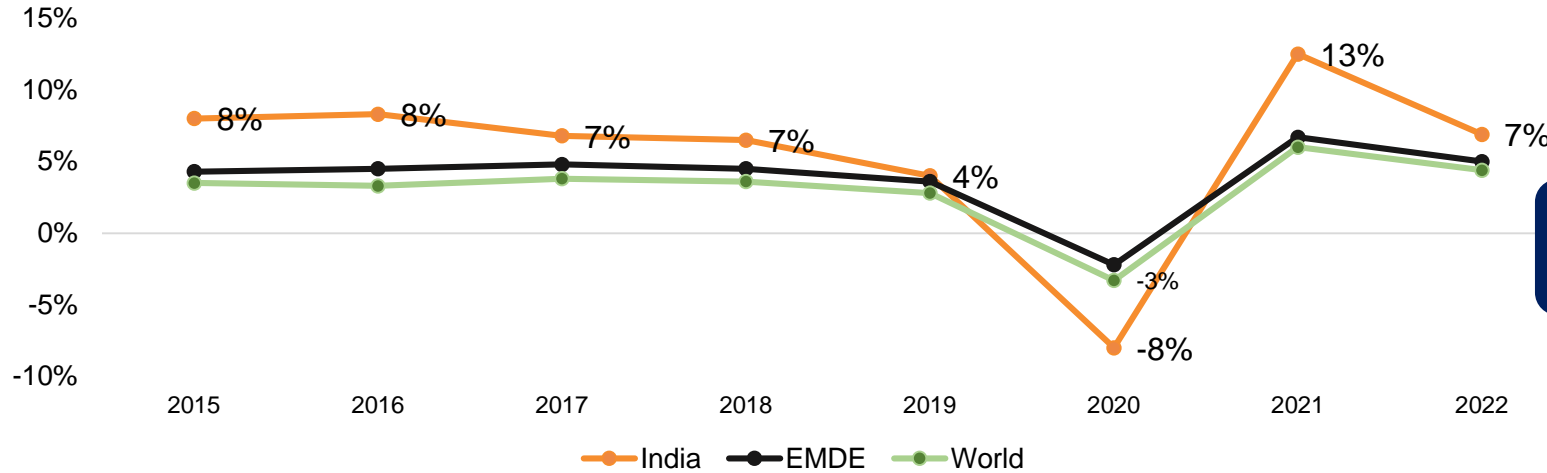
## GSDP Growth Rate Y- O - Y





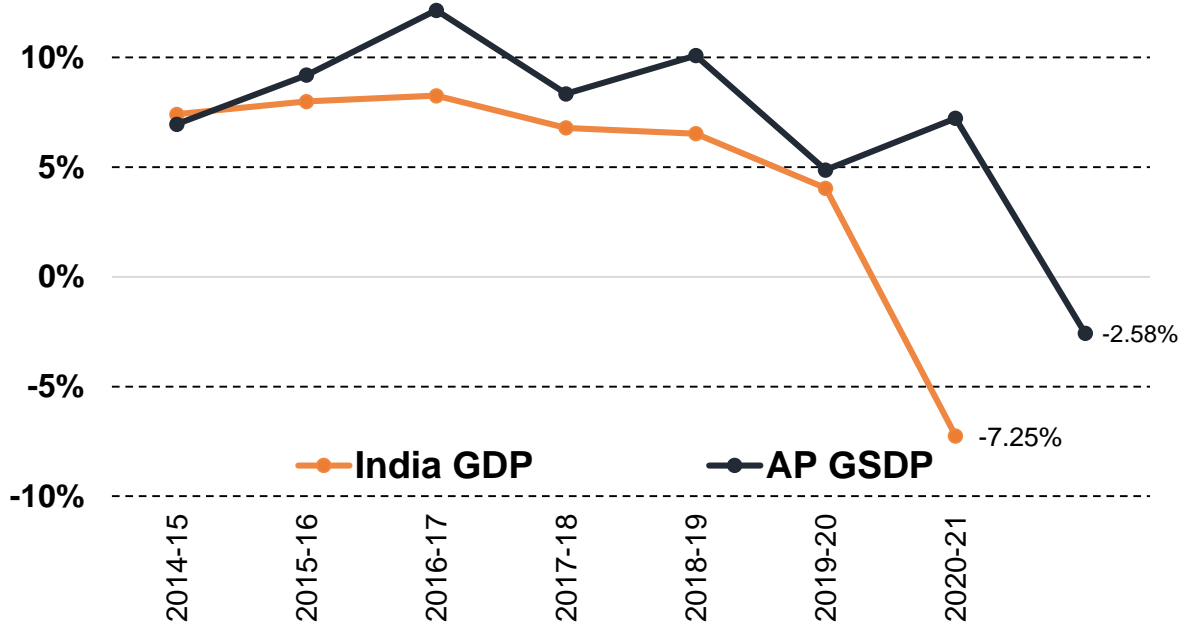
# Warded off Contraction in Nominal GDP – By Protecting Bottom of the Pyramid

## GDP Contraction Across the Board due to COVID

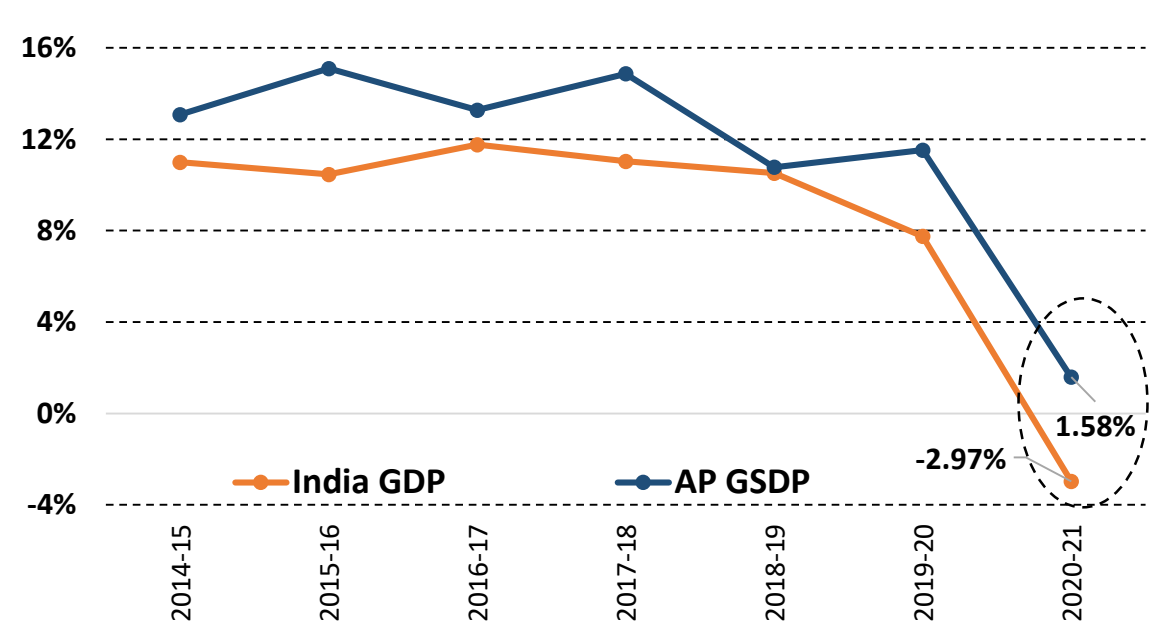


- India GDP contracted by 3% in FY 2020-21
- AP GDP grew by 1.6% in FY 2020-21

## AP vs India Growth Rate at Constant 2011-12 prices



## AP vs India Growth Rate at Nominal 2011-2 Prices





# Navaratnalu (9 assurances) for Comprehensive Social Development

## Navaratnalu (9 assurances)

### Support to Farmers

Rythu Bharosa

### Irrigation Development

Jala Yagnam

### Incentive to Mother for Child Education (Amma Vodi)

### Scholarship for Higher Education

### Women Empowerment

YSR Asara/ YSR Cheyutha

### Social Safety Net

Pensionla Pempu

### Housing for All

Pedalandariki Illu

### Quality Healthcare for All

Arogyasri (Public Financed Insurance)

### Alcohol Ban

## Sustainable Development Goals





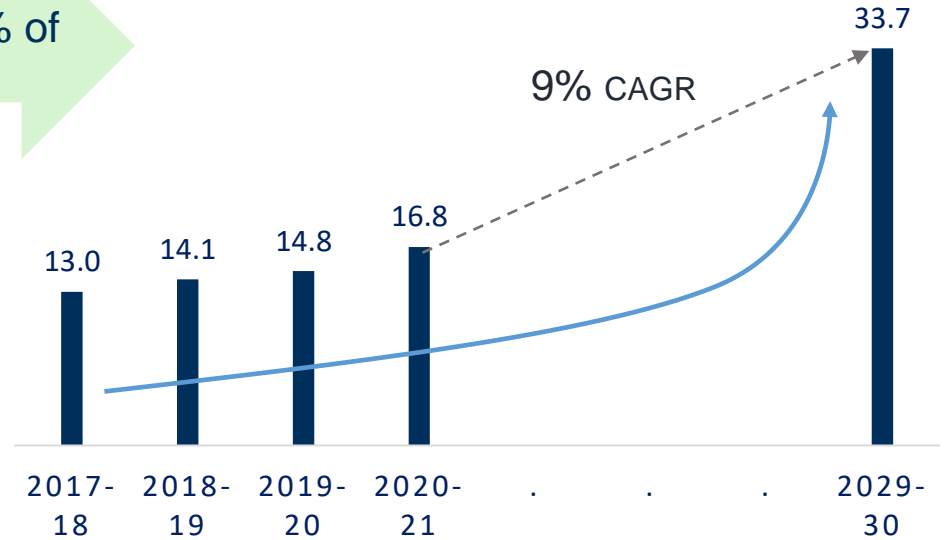
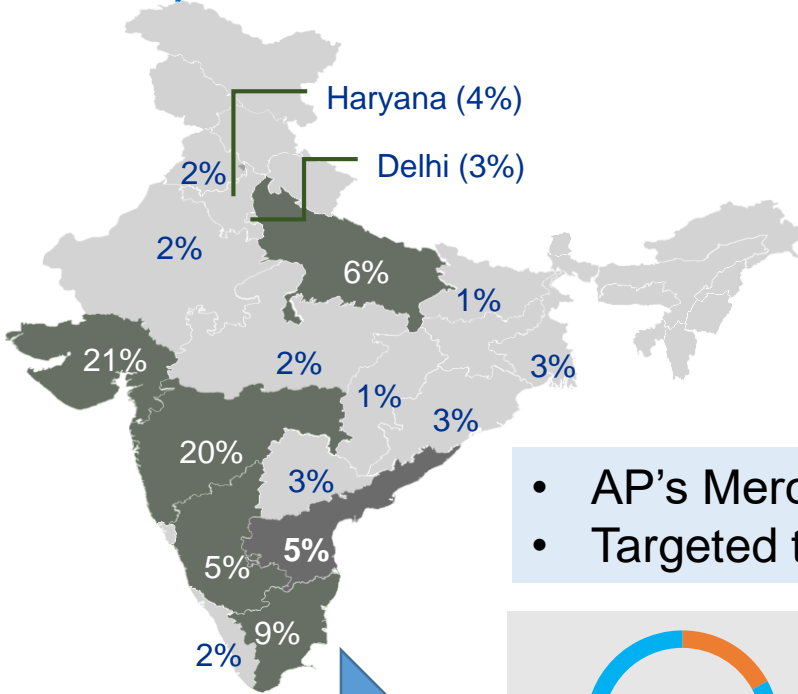
# Hon'ble CM's Vision for Improving Trade & Commerce

Double the share of AP's exports from 5% to 10% by 2030

AP improved from Rank 7 in 2019-20 to Rank 4 in 2020-21 contributing 5.8% of total Indian Exports

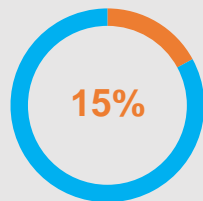
### AP Exports growth trend (USD Bn)

### Export share of States between 2019-21

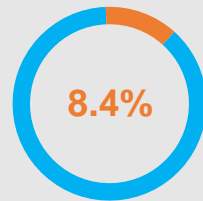


- AP's Merchandise Exports \$ 16.8bn
- Targeted to Reach USD 33.7 bn by 2030

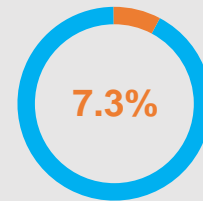
### Top Products Contributing to AP Export Basket



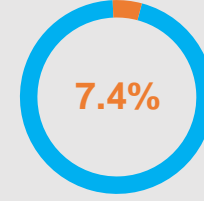
Marine Products



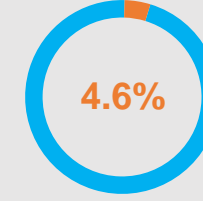
Ship, Boat Structure



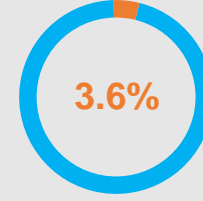
Drug Formulation



Iron & Steel



Rice

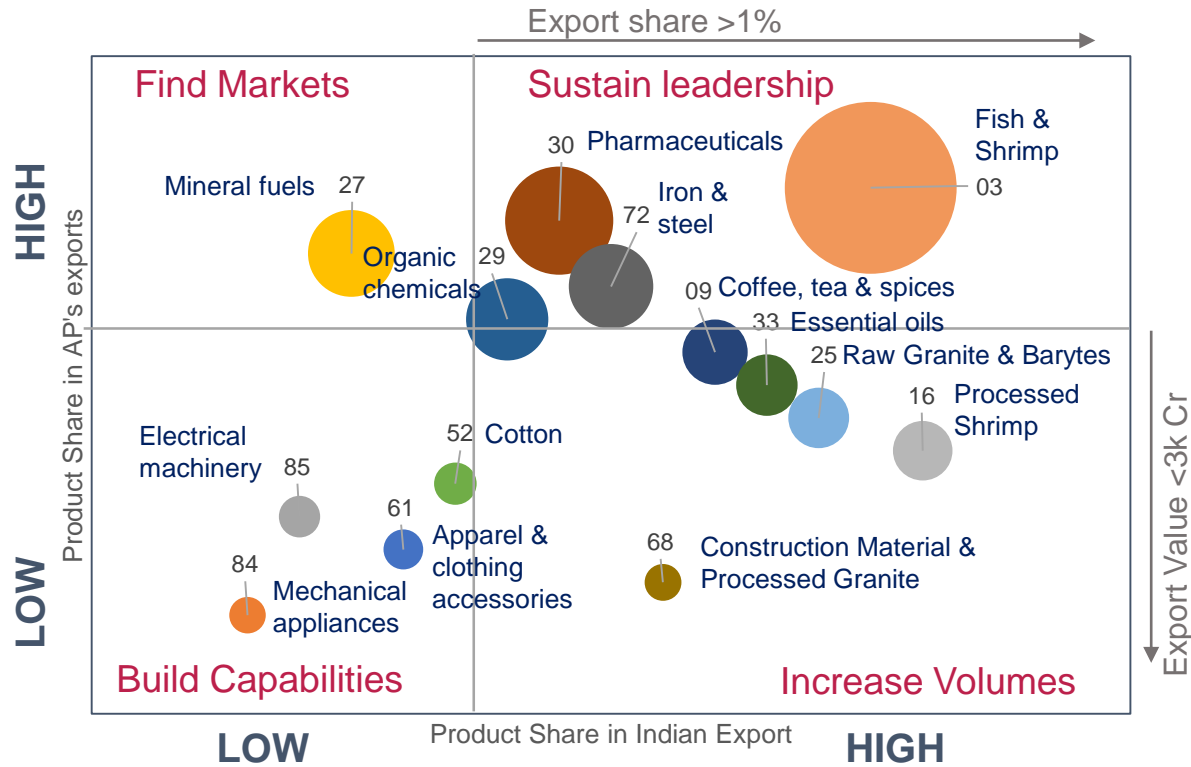


Residual Chemicals



# Target Commodities for Achieving Export Share Doubling

## Strategic Commodities important for AP Exports



\*Analysis from DGCIS & DGFT data

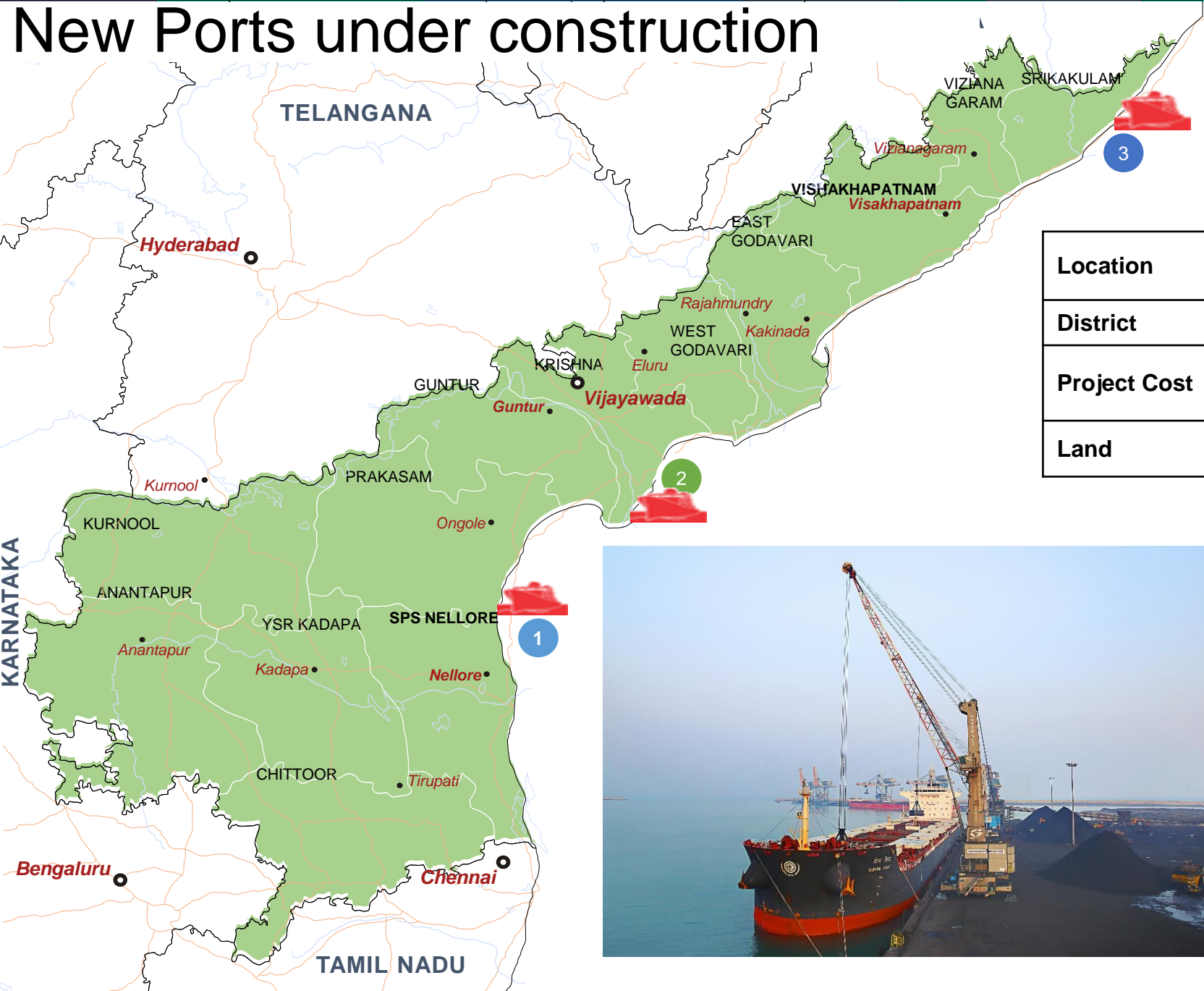
HS Code 89 (Ships, Boats & Floating Structures) is 2<sup>nd</sup> most High Export Value Sector. This sector is kept out of analysis, as there is little assistance State can provide

\*values in USD Billion

Strategy	HSC	Commodity	Export Value (Avg. of 19-21)	Target growth (in 2029-30)	Share in AP exports
			14.64	33.67	
Sustain Leadership	03	Fish & Shrimp	2.18	5.01	14.9%
	30	Pharmaceuticals	1.64	3.77	11.2%
	29	Organic Chemicals	1.43	3.29	9.8%
	72	Iron & Steel	0.99	2.28	6.8%
Find Markets	27	Mineral Fuels	0.44	1.02	3.0%
Increase Volumes	09	Coffee, Tea & Spices	0.50	1.15	3.4%
	25	Raw Granite & Barites	0.37	0.84	2.5%
	16	Processed Shrimp	0.34	0.78	2.3%
	68	Construction Material & Processed Granite	0.23	0.52	1.5%
	33	Essential Oils	0.18	0.41	1.2%
Build Capabilities	84	Mechanical appliances	0.32	0.74	2.2%
	85	Electrical Machinery	0.30	0.69	2.0%
	52	Cotton	0.16	0.37	1.1%
	61	Apparel & Clothing accessories	0.14	0.31	0.9%



# New Ports under construction

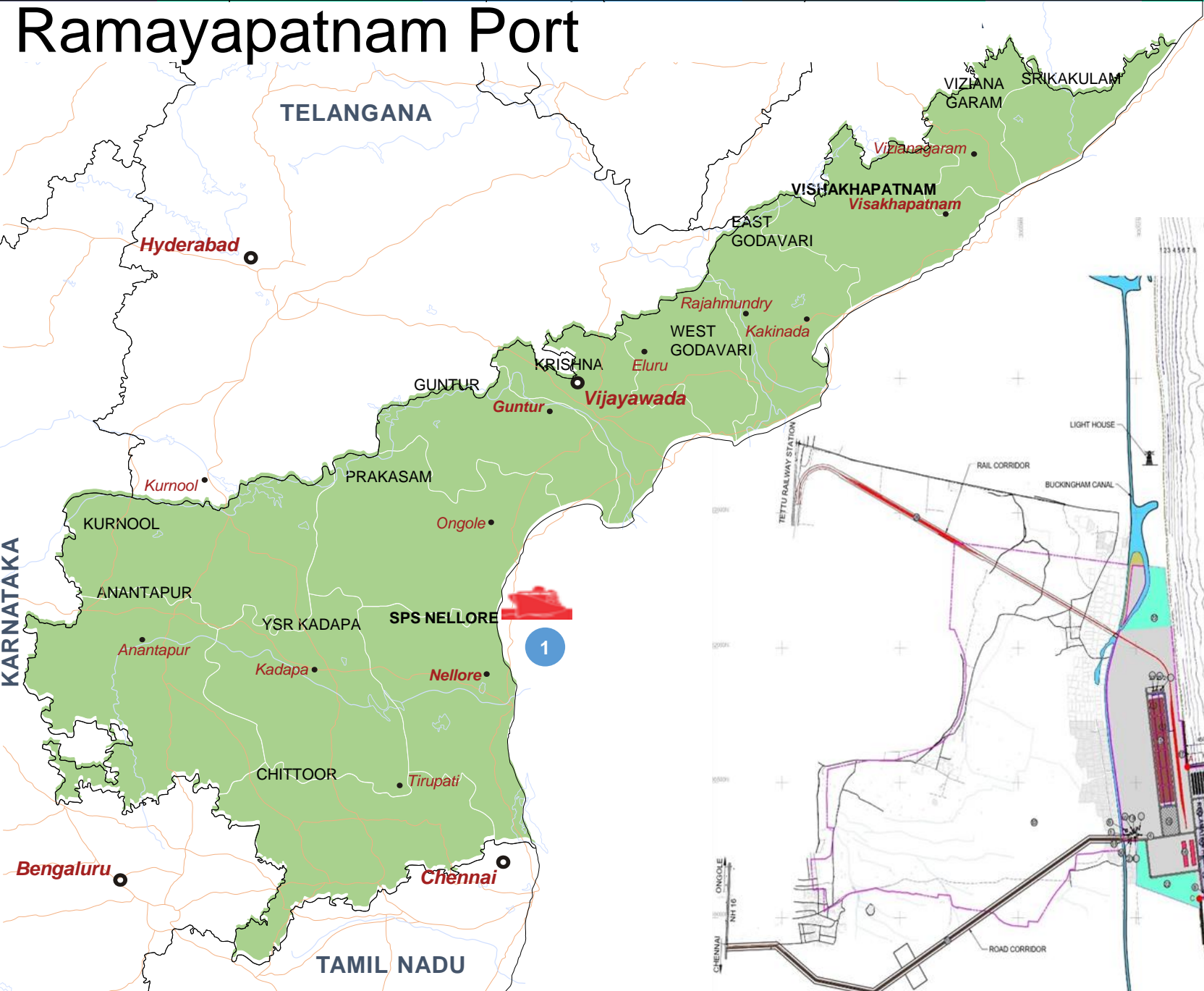


Location	1 Ramayapatnam	2 Machilipatnam	3 Bhavanapadu
District	Prakasam	Krishna	Srikakulam
Project Cost	7,500 Crores	5,155 Crores	5,155 Crores
Land	2,000 Acres	3,000 Acres	3,000 Acres



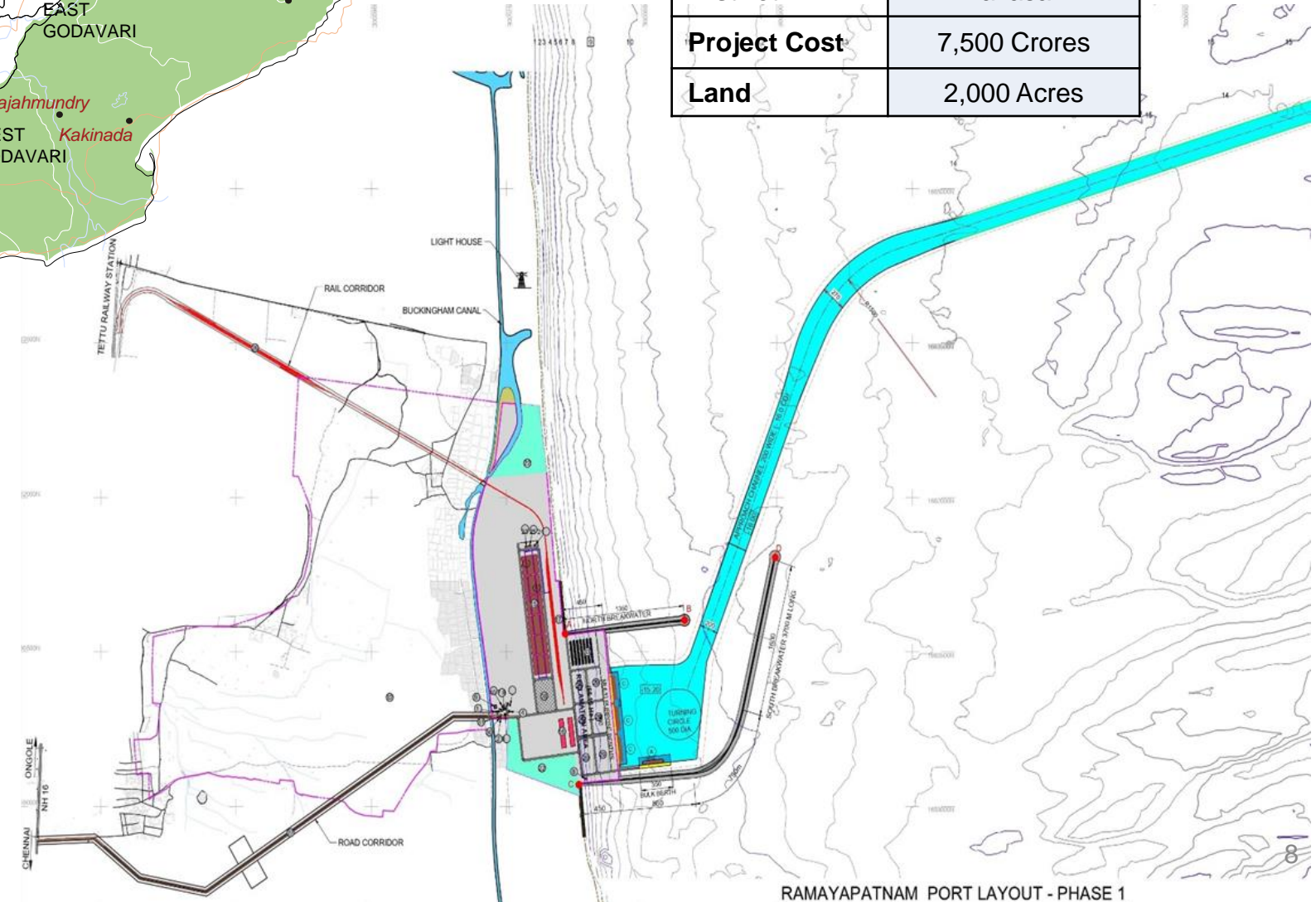


# Ramayapatnam Port



## Ramayapatnam Port

Location	Ramayapatnam
District	Prakasam
Project Cost	7,500 Crores
Land	2,000 Acres

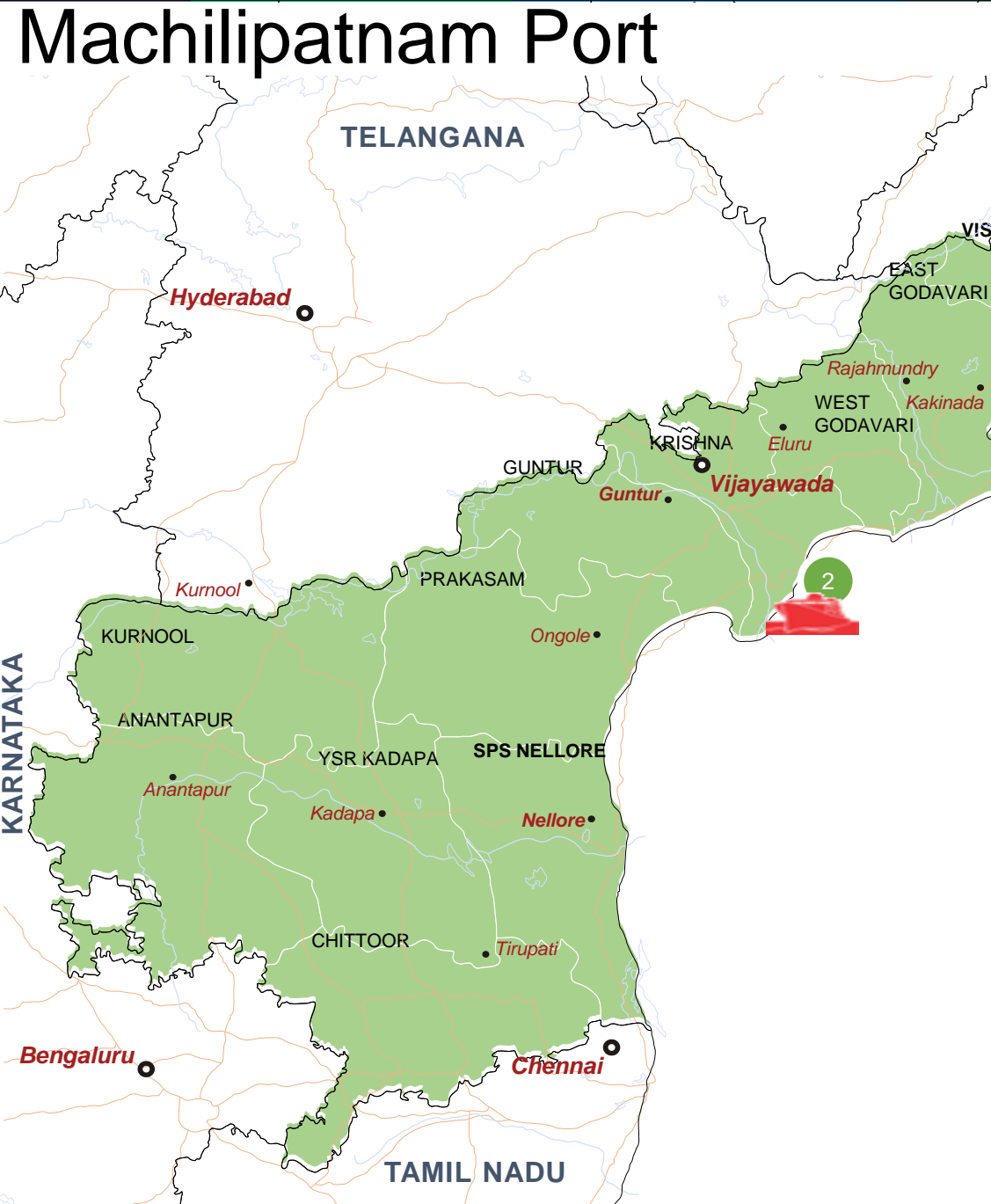


RAMAYAPATNAM PORT LAYOUT - PHASE 1



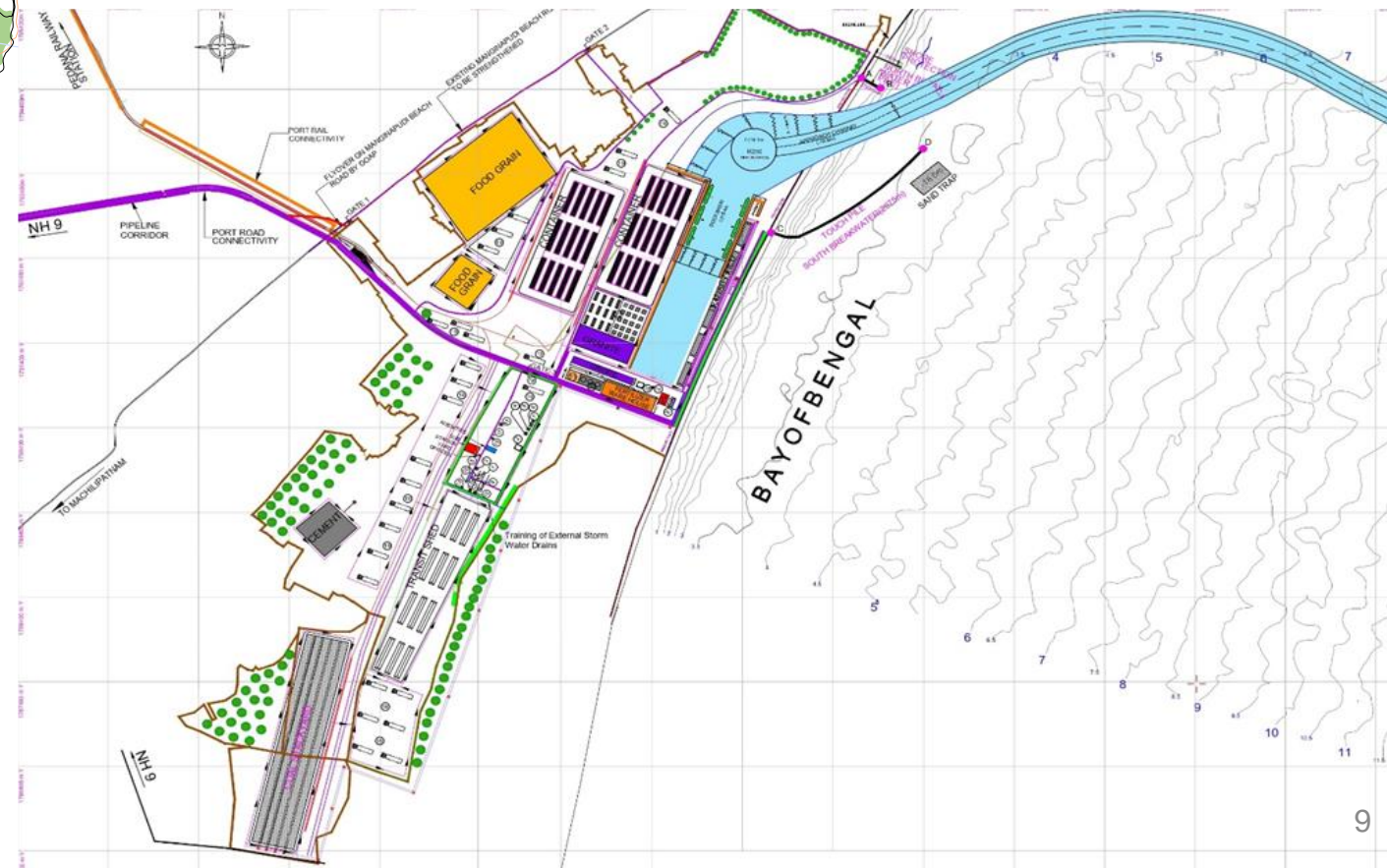


# Machilipatnam Port



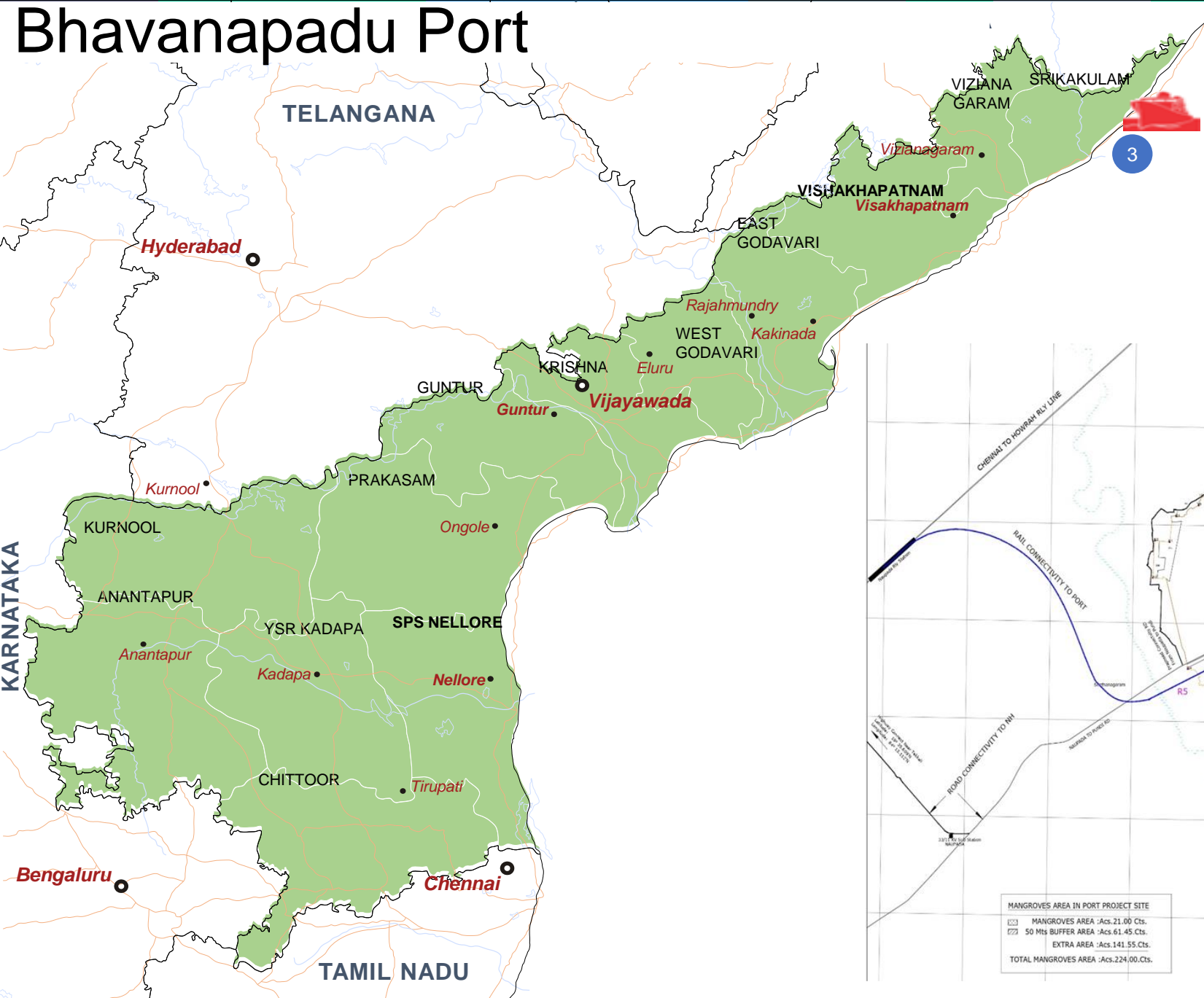
## Machilipatnam Port

Location	Machilipatnam
District	Krishna
Project Cost	5,155 Crores
Land	3,000 Acres



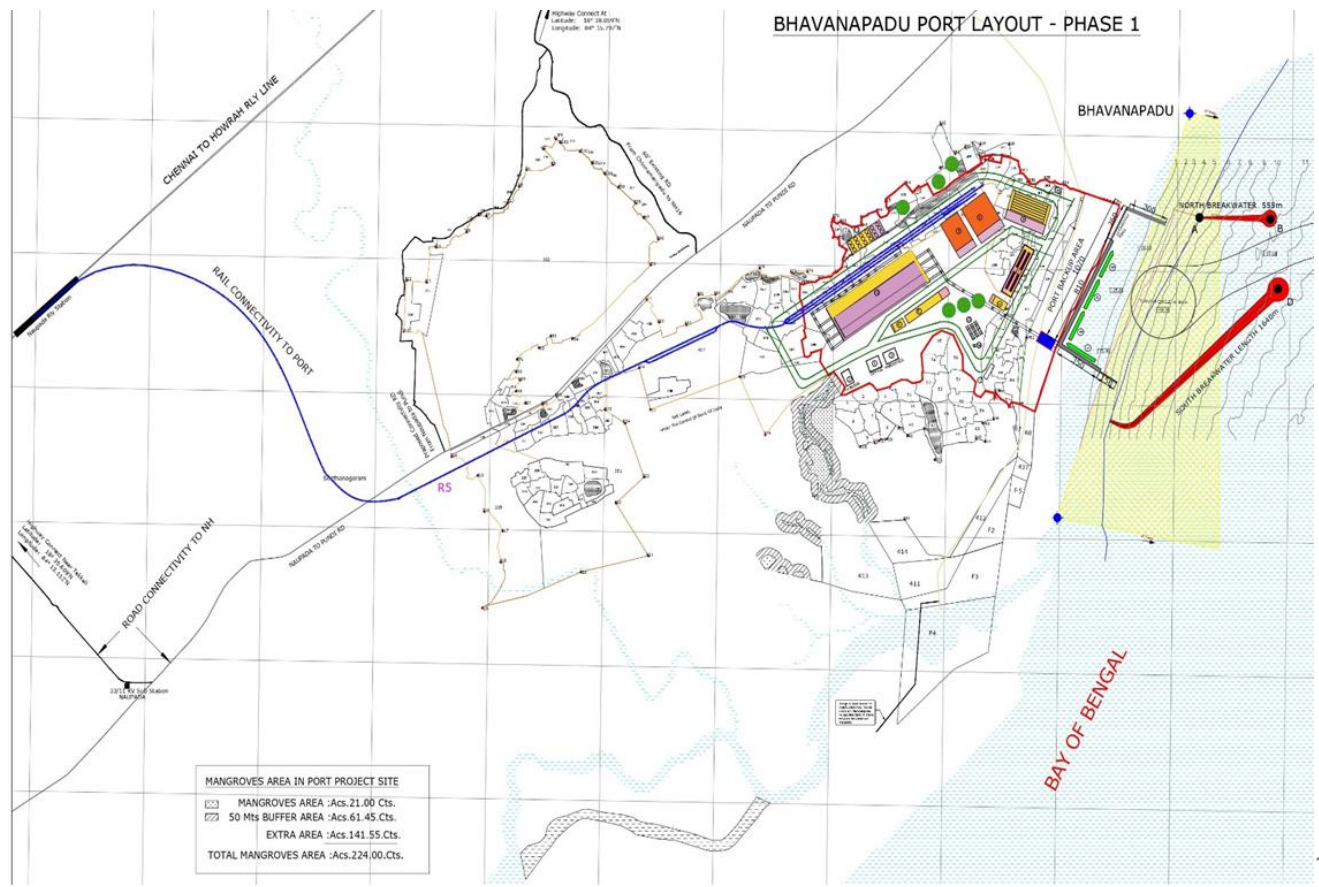


# Bhavanapadu Port



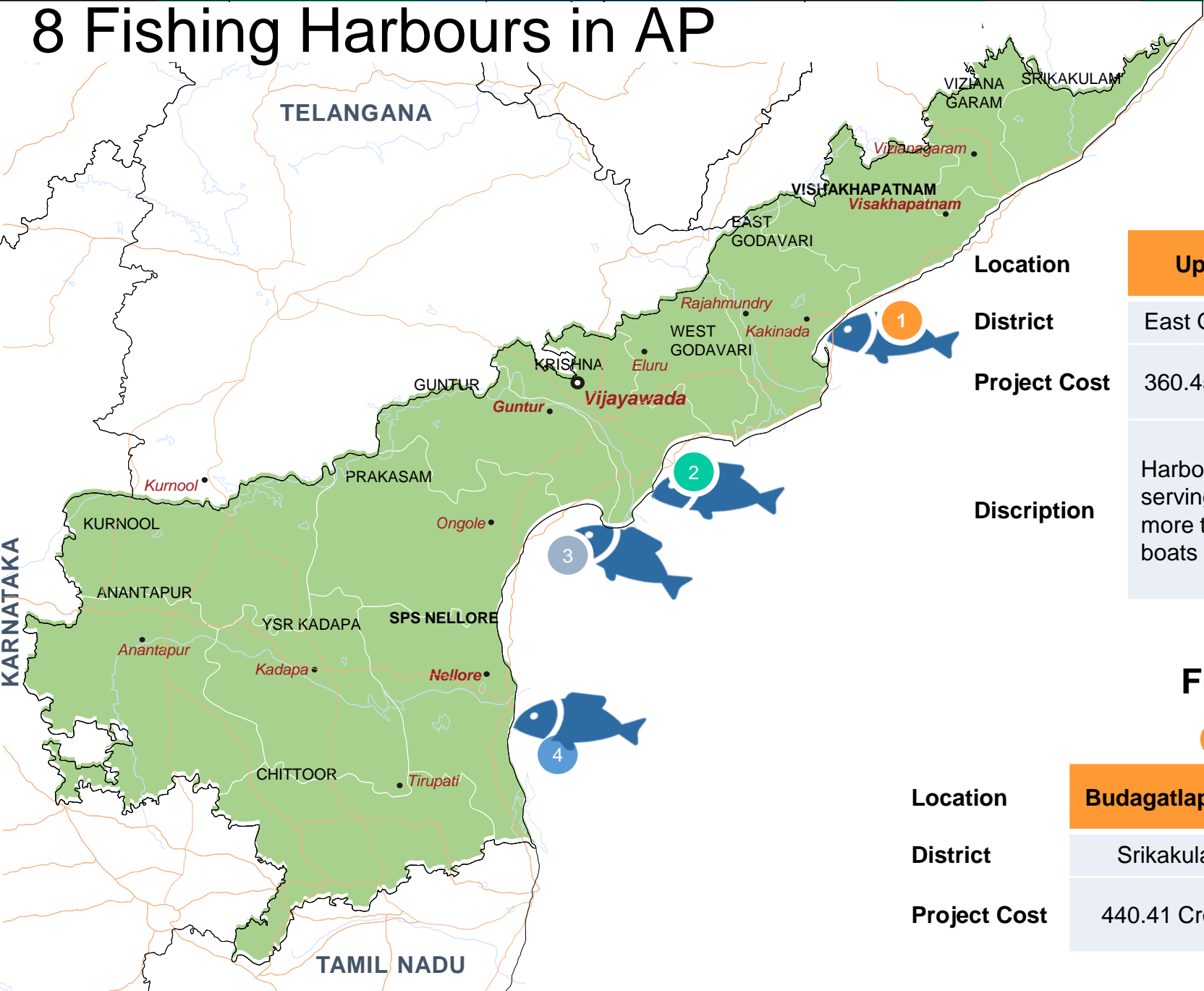
## Bhavanapadu Port

Location	Bhavanapadu
District	Srikakulam
Project Cost	5,155 Crores
Land	3,000 Acres





# 8 Fishing Harbours in AP



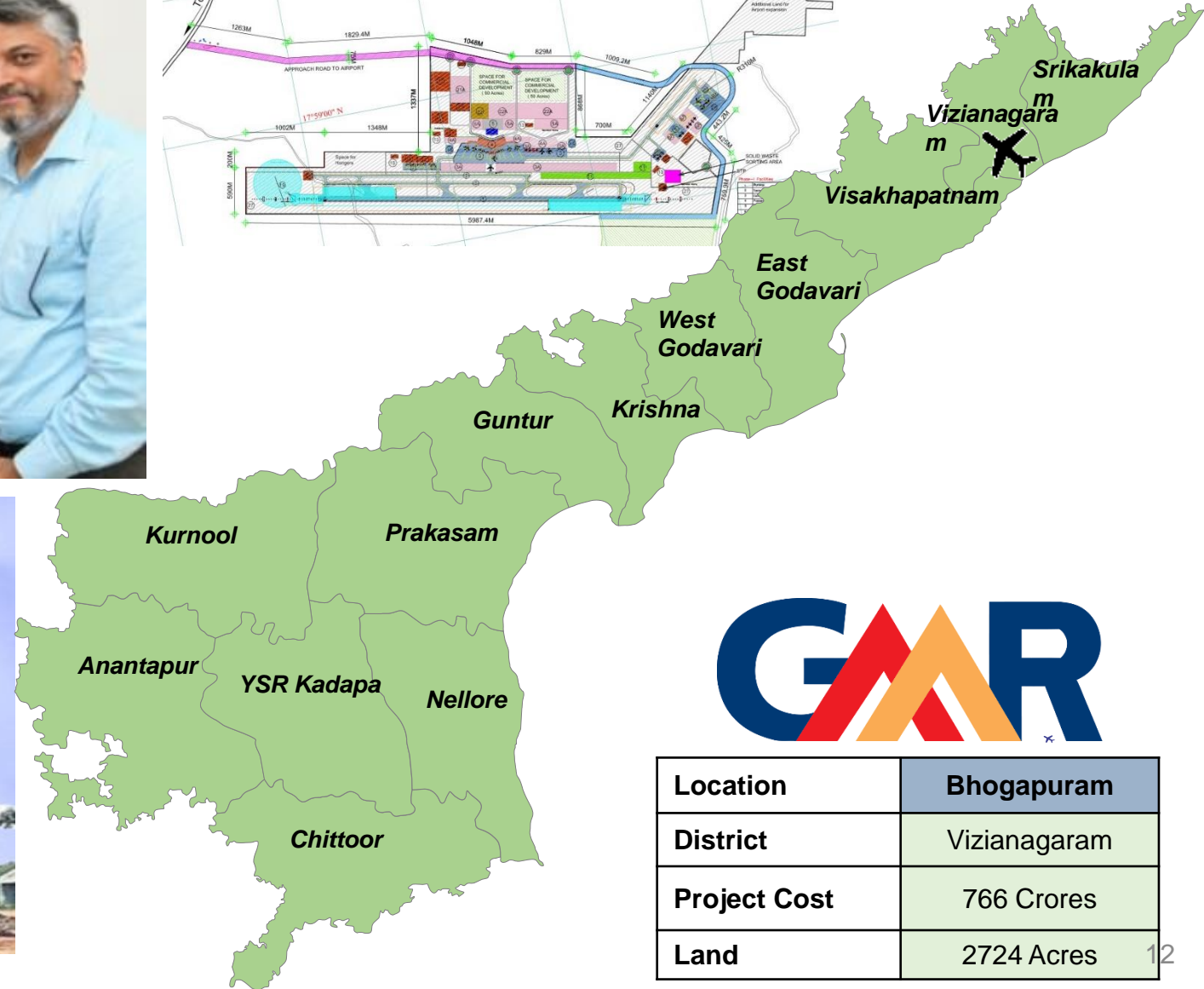
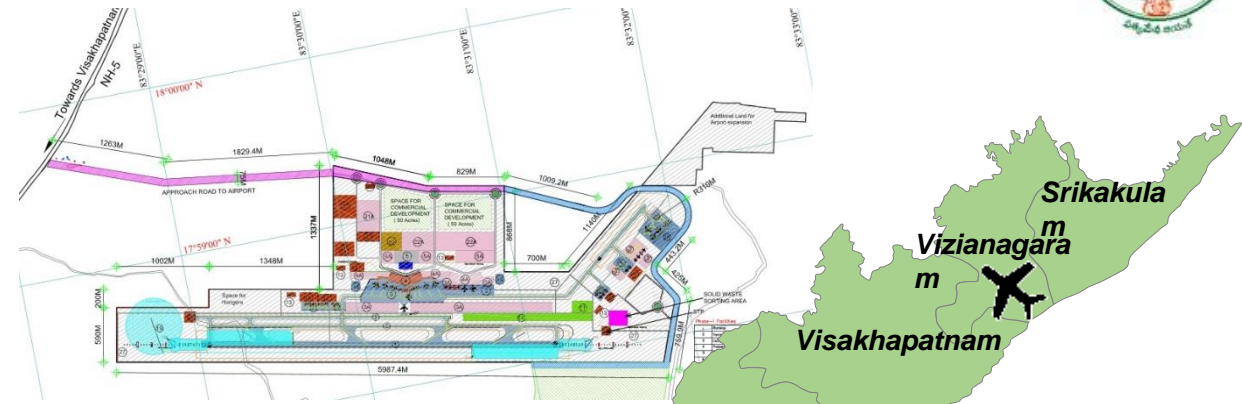
## Under Construction Phase-1

	1	2	3	4
<b>Location</b>	<b>Uppada</b>	<b>Machilipatnam</b>	<b>Nizampatnam</b>	<b>Juvvaladinne</b>
<b>District</b>	East Godavari	Krishna	Guntur	Nellore
<b>Project Cost</b>	360.45 Crores	421.17 Crores	450.46 Crores	349.11
<b>Description</b>	Harbour is serving for more than 500 boats	It is designed for accommodating 350 Nos of Mechanised Fishing Vessel	It is designed for 250 Nos of Fishing Vessels	It is designed for 200 Nos of 9.80 M long mechanised Fishing Vessels

## Fishing Harbours planned Phase-2

	5	6	7	8
<b>Location</b>	<b>Budagatlapalem</b>	<b>Pudimadaka</b>	<b>Kothapatnam</b>	<b>Biyyaputippa</b>
<b>District</b>	Srikakulam	Visakhapatnam	Prakasam	West Godavari
<b>Project Cost</b>	440.41 Crores	468.36 Crores	392.45 Crores	994.05

# Bhogapuram Greenfield International Airport



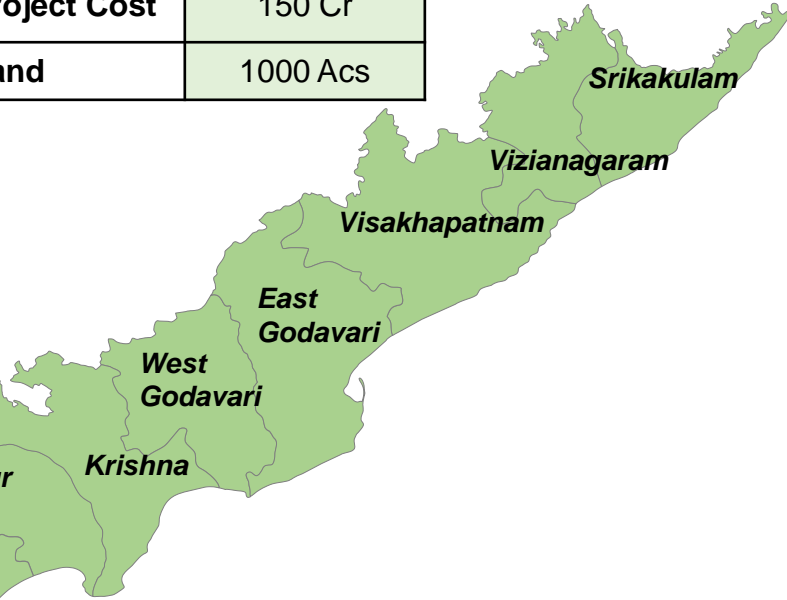
Location	Bhogapuram
District	Vizianagaram
Project Cost	766 Crores
Land	2724 Acres



# Uyyalawada Narasimha Reddy Airport, Kurnool



Location	Orvakal
District	Kurnool
Project Cost	150 Cr
Land	1000 Acs





# Andhra Pradesh – Only state with 3 Industrial Corridors

## 1 Visakhapatnam Chennai Industrial Corridor

Node	Sub Node	Total Land
Vizag (6,848 Ac.)	Nakkapalli	4,316 Ac.
	Atchutapuram (Rambili)	2,532 Ac.
Chittoor (13,319 Ac.)	South Block	13,319 Ac.
Kopparthy	Kopparthy	4,085 Ac.



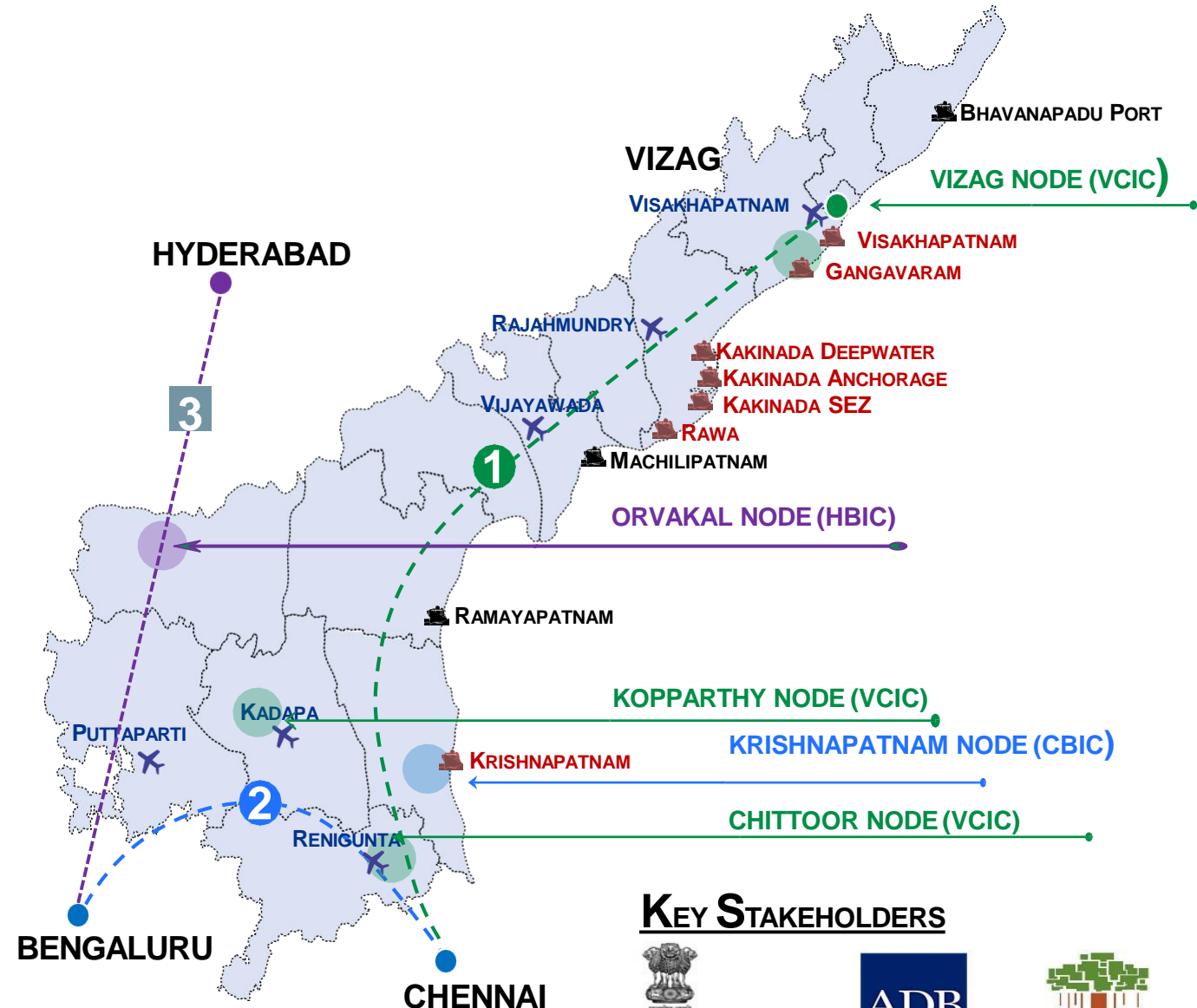
## 2 Chennai Bengaluru Industrial Corridor

Node	District	Total Land
Krishnapatnam (12,944 Ac.)	Nellore	11,340 Ac.
	Chittoor	1,604 Ac.



## 3 Hyderabad Bengaluru Industrial Corridor

- Orvakal Node – 9,350 Ac. [NICDC]



### KEY STAKEHOLDERS





# Visakhapatnam Chennai Industrial Corridor 1/2



**APIIC-01 : LTDS and centrifuge building and processing work**



**APIIC-03 : ELSR 20 L.Lts. Capacity**



**APIIC-04 : 10MLD Water Treatment Plant**



**APIIC-05 : Laying of 700mm DIA DI K-9 Pipe along Rapur-Gudur-Krishnapatnam**

# Visakhapatnam Chennai Industrial Corridor 2/2



APTransCo./01 : Laying of Underground Cable at Kapuluppada



APTransCo./03 : 315 MVA Power Transformer at 400/220 KV SS Rachagunneri



APRDC/01 : FDD Testing for WMM : S-R Road



GVMC/02 : Gravity Main Lowering work : 24\*7 Water Supply Project



# YSR EMC 2.0, Kopparthi, Kadapa

Flat land sloping from west to east



Ready Built Factory Sheds for Plug & Play



## Total Extent: 6.914 Ac

- Area proposed for development under NICDIT: 4,085 Acre
- Balance area being developed by APIIC: 2,829 Acre
  - **YSR EMC: 801 Acre**
  - MSME-CDP: 105 Acre
  - MSME-Yadavapuram: 56 Acre
  - Other Industrial Developments: 1,867 Ac





# YSR Jagannana Mega Industrial Hub – Koppathy, Kadapa

6 Lane road being constructed for connectivity to National Highways





# Hyderabad Bengaluru Industrial Corridor - Oravakal



**Infrastructural works at Orvakal Mega Industrial Hub**



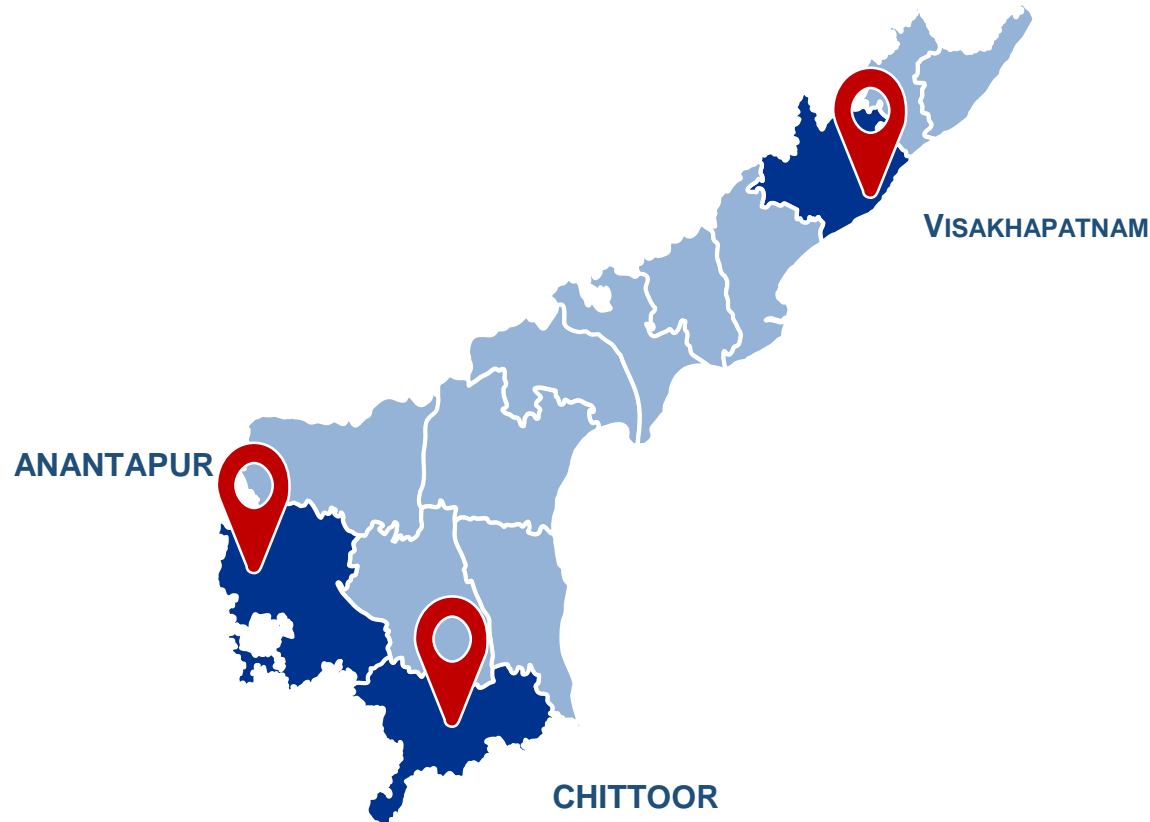
**Jairaj Ispat Ltd - Integrated Steel Plant, Works in Progress**



# Concept Cities – Giving Filip to IT/ITeS in AP

*GoAP envisions creating clusters with significant cost advantage and speed of execution*

“IT Concept cities to be planned in an extent of 1,000 - 2,000 acres to provide thrust to the development of IT/ITeS sector in Andhra Pradesh.”



Serene atmosphere with high quality of life



Fastest approvals to reduce time to start operations



SEZ and non-SEZ areas



Connectivity to Highways and Airports



Availability of skilled manpower



World class common infrastructure and vibrant social infrastructure



Walk to work



Plug & play units and co-working spaces



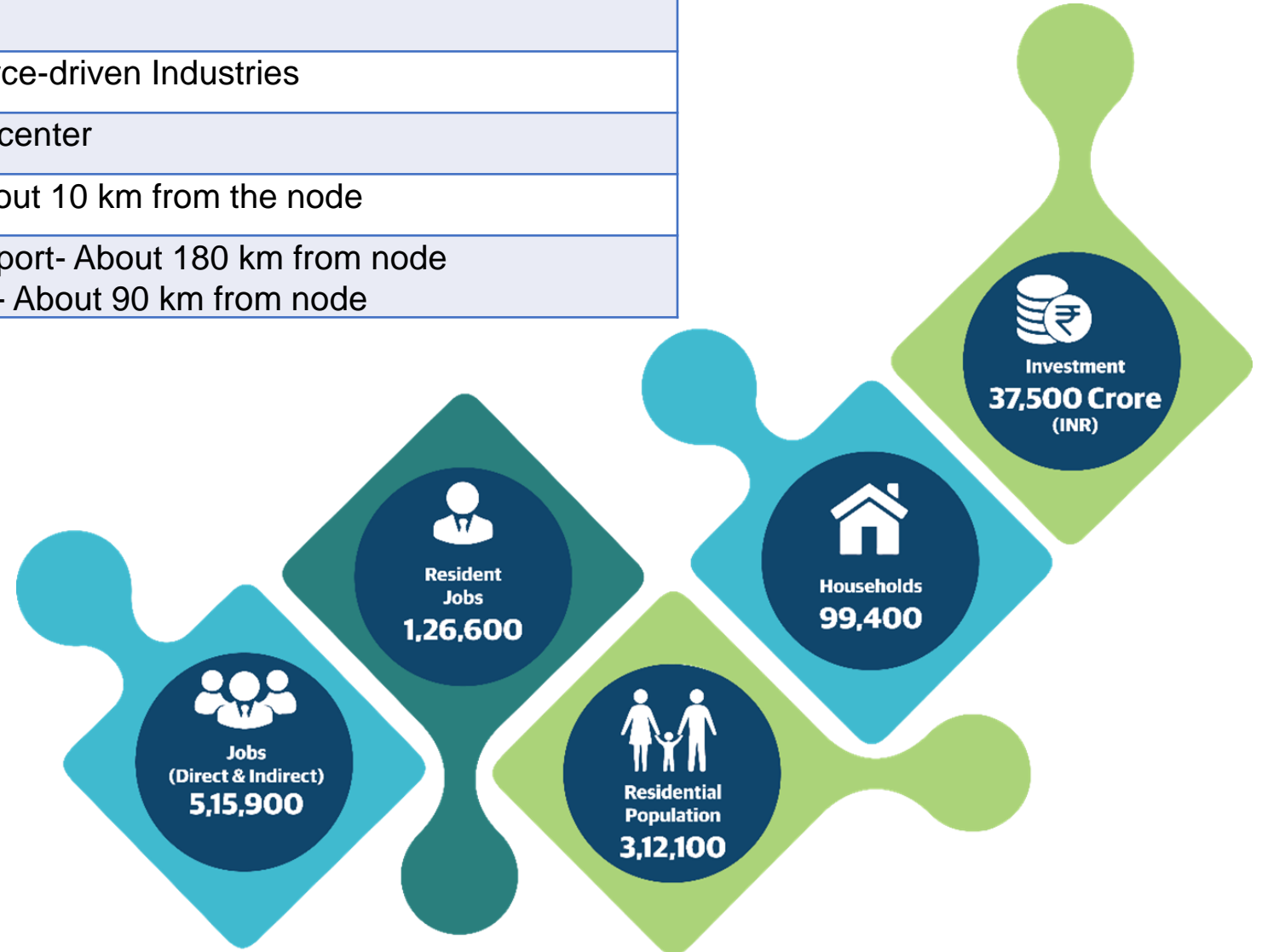
# KRIS City - Krishnapatnam Industrial City – (1/2)



District	Nellore
Area of node	Total node: 12,944 acres
Node Vision	Industrial Hub for Resource-driven Industries
Nearest Urban Centre	40 kms from Nellore city center
Nearest Ports	Krishnapatnam Port - About 10 km from the node
Nearest Airport	Chennai International Airport- About 180 km from node Tirupati Domestic Airport- About 90 km from node

## MARKET DEMAND ASSESSMENT

- Food Processing
- Textile And Apparels
- Auto And Auto Components
- Electronics
- Others including Building and materials



1

Strengthening Site Connectivity

2

Resiliency to Flooding events

3

Livability

4

Integration with adjoining development

5

Flexibility in industrial plot allocations

6

Operational efficiency

7

Phasing that optimizes financial viability

## Cluster 1

Food Products  
Textile And Apparels  
Other Industries including Non-metallic mineral products

## Cluster 2

Auto & Auto Components

## Cluster 3

Electronics & Communication Equipment





# YSR Steel Corporation - *State of the Art 3 MTPA Plant*



Hon'ble CM Addressing the Gathering



HCM & HIM attending the pooja ceremony



Foundation Stone Unveiled by Hon'ble CM



MOU signing ceremony between AP High Grade Steels Limited and NMDC



# YSR Steel Corporation - Site Progress Photographs



Elevation of North Entrance Gate



North Entrance Gate on Site



Bhoomi Pooja for 4 Lane Road to project site



Project Office Elevation



Project Office Foundation at project Site



Compound Wall Construction





# IEM - Total value of investment intentions implemented (Part B)

**Part B indicates units that have filed IEM Part A and that have moved into commercial production – Tracked by DPIIT, Government of India**

States	2014	2015	2016	2017	2018	2019	2020	2021
Andhra Pradesh	2,804	4,542	11,395	4,509	9,553	34,696	9,840	1,039
Telangana	1,137	494	2,405	3,306	6,369	7,364	6,057	44
Tamil Nadu	2,500	501	4,793	1,574	2,111	2,860	1,184	1,921
Karnataka	2,361	13,780	9,162	2,455	24,480	21,984	6,565	4,360
Gujarat	40,954	5,991	8,267	9,795	31,819	NA	34,866	37,908
Maharashtra	6,024	18,854	40,588	18,993	130797	34,190	33,715	5,960
Orissa	7,521	538	769	179	3,808	47,434	28,953	1,182
Rajasthan	1,544	3,918	7,277	3,016	4,121	12,258	5,917	1,593
Uttar Pradesh	872	1,791	522	2253	12,934	6,162	14,177	3,608



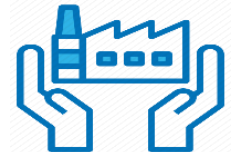
**Andhra Pradesh has consistently performed better than Tamil Nadu & Telangana in Implementation**

# 2021 data is till Feb 2021\* (Numbers in crores)

- During the period 2014-2018, the average grounded investment in Andhra Pradesh was 6,561 crores.
- Both in 2019 and 2020, AP has exceeded the average grounded investments

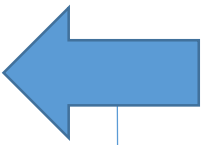


# Status of Industrial Progress – Since Jun'19



## Projects Grounded

Category	No. of Units	Investment (INR Cr)	Employment
Large & Mega	65	29,781	45,049
MSME	13,885	4,221	88,516



## Projects Under Implementation

Category	No. of Units	Investment (INR Cr)	Employment
Large & Mega	62	36,384	76,916
Public Sector Units	5	96,400	79,700



## Projects Under Consideration

Category	No. of Units	Investment (INR Cr)	Employment
Active Consideration	18	18,334	40,794
Evinced Interest	49	1,25,572	1,15,375



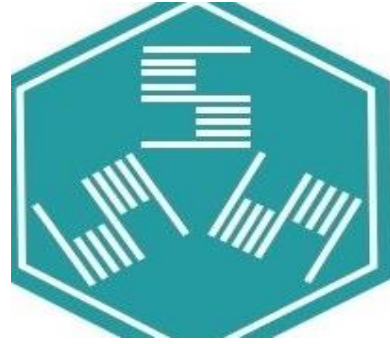
## Projects – Land Allotments Made

No. of Units	Land Allotted (Acs)	Investment (INR Cr)	Employment
2,068	2,526	18,171	1,54,757





# New Investments Since June 2019





# Investments Under Implementation





# Investments Grounded Since June 2019





# Marquee Companies – Progress

Srikalahasti Pvt Ltd – Ductile Iron Pipes and Ferro Alloys (INR 631 cr, 2,100 Employment)



Civil Works commenced on March 2020

CRRC India Pvt Ltd – Metro Coach manufacturing (INR 614 cr, 550 Employment)



Foundation Stone laid on March 2021

Foxlink India Pvt Ltd – Electronic cables and Mobile components



Civil Works commenced on October 2020

ATPL Pvt Ltd – Textiles (Garment and Weaving) (INR 34 cr, 2,304 Employment)



Foundation Stone laid on March 2021

Greentech Industries – Steel and Iron Castings (INR 725 cr, 2,200 Employment)



Civil Works completed for Machine Shop on March 2020

Apache Footwear – Sector-specific SEZ (INR 500 cr, 10,000 Employment)



Foundation Stone laid on December 2020



# Efforts by AP: COVID -19 Measures and Business Continuity Plans

The Govt of AP has taken a “Whole of Govt” approach to combat the crisis and revive the industries

**Dedicated Desk to handle Industries reopening with SOPs,** Inter-state movement of goods, raw materials, and workforce

AP is the **first state in the nation to launch the MSME Support Package (ReSTART – 1,110 Cr Package)** on April 30<sup>th</sup> 2020, and even **completed implementation** of the same by 30<sup>th</sup> June 2020



## Augmenting the Oxygen Capacity

- District level nodal officer from DIC at the rank of AD/DD to ensure continuous production and resolve issues
- Conversion of industrial oxygen cylinders to medical oxygen cylinders through DICs
- Identified and revived sick PSA plants for producing oxygen





# Augmenting the Oxygen Capacity

1. **52.75 MT/Day** capacity created by reviving 9 PSA Units
2. **17.3 Mt/Day** capacity revival in progress in 5 PSA units
3. **11.41 MT/day** is being added by conversion of 12 Nitrogen units
4. Makeshift **500 bed COVID hospital** at ARJAS Steel, Anantapur
5. Arjas Steel 30MT, AP paper mills (15 MT: *14.5 MT gaseous and 0.5 MT liquid*) have come forward for providing medical oxygen to temporary hospitals set up near the units. Sri Kalahasti Pipes (30 MT) is under progress
6. Conversion of Cryogenic plants for the production of oxygen in AP Paper Mills (0.5 MT/Day) is completed, Liberty Steels (30 MT/day) is being pursued
7. 29 Medical Oxygen refilling units have a capacity of 200.8 MT/day. Cylinders available were only 24,267. Therefore 16,168 industrial oxygen cylinders are being converted for medical use (9,601 converted by 6<sup>th</sup> June)
8. 8 Cryogenic tankers procured through VRV enterprises, Sri City and Supplied through various districts
9. Modalities of **125kl storage tank by Praxair** is being finalized
10. **Nova Air (Sri City)** 140 TPD Oxygen is coming up by October 2021; **Atmos Liquid (Kadapa):** 70 TPD of Oxygen; **Linde Praxair (Chittoor):** 170 TPD Oxygen and **Inox Air Products (VJA/Guntur):** 200 TPD Oxygen will come up in the next 12-15 months





# Oxygen Augmentation in Progress

Makeshift 500 bed COVID hospital at ARJAS Steel, Tadipatri, Anantapur



Installing PSA Oxygen Plant by NACL at RIMS, Srikakulam (Converted From Nitrogen)





# Overview of Industrial and related Policies

**Jagananna YSR  
Kopparthy Mega  
Industrial Park  
Policy 2020-23**

Special Package  
Incentives for industries  
set-up at YSR  
Kopparthy, Kadapa

**YSR EMC Kopparthy  
Electronics Policy  
and AP Electronics  
Policy 2020-23**

Special Package  
Incentives for  
electronics companies  
setup at EMCs – YSR  
Kopparthy and Tirupati

**AP Industrial  
Development  
Policy 2020-23**

Balanced growth  
across regions and  
reducing cost of doing  
business

**Jagananna YSR  
Badugu Vikasam  
Policy 2020-23**

Support SC & ST  
entrepreneurs in  
setting up industries  
without any hassles

**AP Oxygen  
Manufacturing  
Policy 2020-23**

Making AP self-  
sufficient to cater to  
all the Medical O2  
needs and augment  
the medical oxygen  
supply chain



Industrial Development Policy 2020-23



# Key Interventions for Handholding MSME

## YSR NAVODAYAM

- Under YSR Navodayam, a total of 101,903 accounts worth INR 2,807 crores were restructured

## ReSTART

- Govt. released pending incentives of Rs.904.89 Crores to 11,238 units
- Rs 200 Cr working capital fund for providing loans at a 6-8% interest rate

## ECLGS

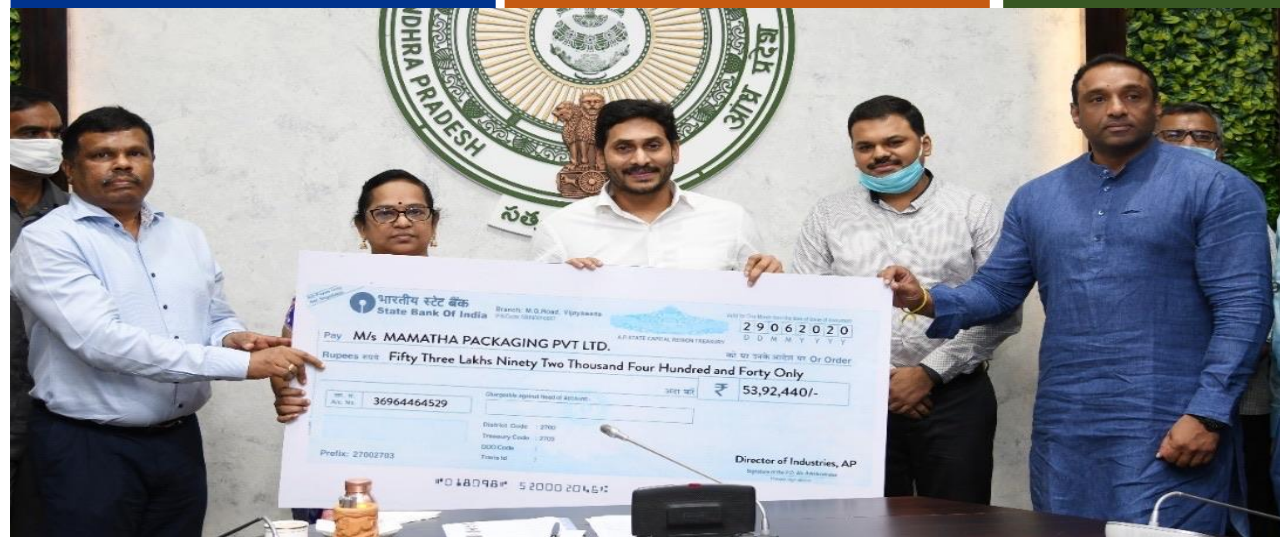
- Under ECLGS, 3192 cr has been disbursed to 1,64,46 accounts

## PMEGP

- In 2019-20, the state had outperformed its financial target by 273.79%
- In 2020-21 (Jan '21), the state has achieved 83% of the set financial target

## YSR Nirmaan

- Departments across the state have placed 80,515 orders which accumulate to 23.94 lakh MTs of cement of which ~90% has been fulfilled by 31<sup>st</sup> Mat 2021





# MOU with Small Industrial Bank of India (SIDBI) for MSME Support

Design of schemes in the areas of equity support, interest subvention, resolution of stressed MSMEs, learning events for MSME entrepreneurs



Developing process for handholding MSME units and extending support to onboard into digital platforms such as PSBLoansIn59Minutes, Stock Exchange listing, e-commerce platforms such as GEMs, etc.

Developing repository of good practices and guidelines for MSME's both within and outside the state

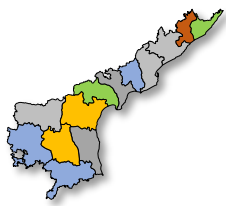
Evaluate potential for infrastructure projects for MSMEs in clusters / districts

Providing support in developing effective policy for MSME's to the state



# One District One Product - Made in Andhra Pradesh

## One District One Product Andhra Pradesh



**WHY?**  
**'Vocal for Local':** local products to make a mark domestically and globally.

**WHAT?**  
Primarily one product is selected across each district of Andhra Pradesh to address gaps/challenges in the development path of products. It covers all aspects of product ecosystem, including value chain gaps and infrastructure gaps.

**EAST GODAVARI**  
Coir & Coir Products



### PRODUCTS COVERED



**SRIKAKULAM**  
Pondur Cotton

**KURNOOL**  
Stone Carving



**KRISHNA**  
Kondapalli Toys



**VISAKHAPATNAM**  
Etikoppaka Toys



**VIZIANAGARAM**  
Mango Jelly



**Narsapur (WEST GODAVARI)**  
Crochet Lace

### OUTCOME: Products are



1. Localised



2. Genuine



3. Geo-Tagged



4. High Sales & strong product potential



**ANANTAPUR**  
Readymade Garments



Udaygiri (**NELLORE**)  
Wooden Cutlery



**GUNTUR**  
Red Chilly



**PRAKASAM**  
Granite Polishing



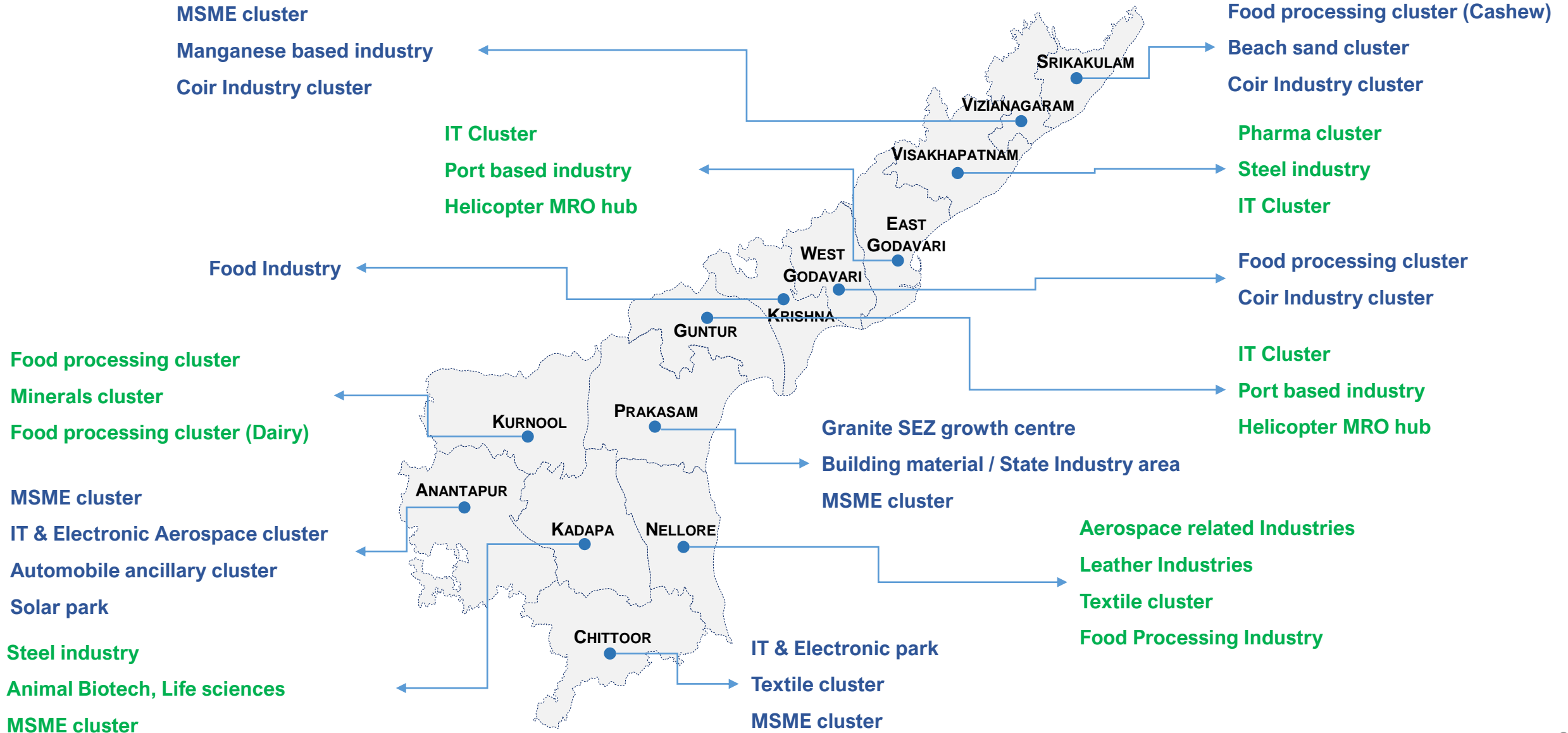
**CHITTOOR**  
Pen Kalamkari

**KADAPA**  
Barium & Baryte's



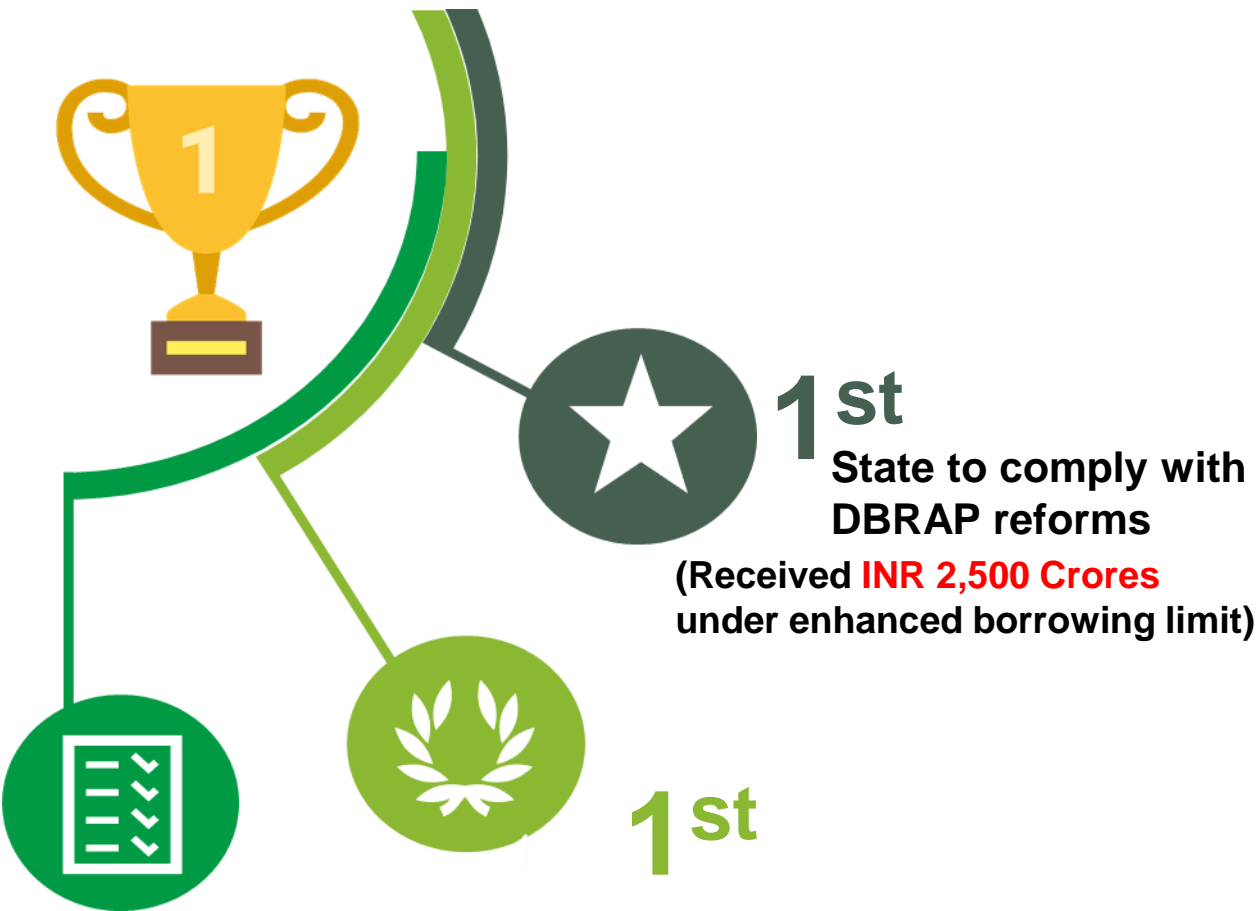


# Potential for developing Industries/ MSMEs clusters across districts





# Business Reform Action Plan



## Highest

in BRAP 2019 under Ease of Doing Business

Rating in BRAP 2019 perception survey

## Ease of Doing Business 2019



Successfully submitted evidences for all recommendations under SRAP 2020-21 as on Jan 31, 2021

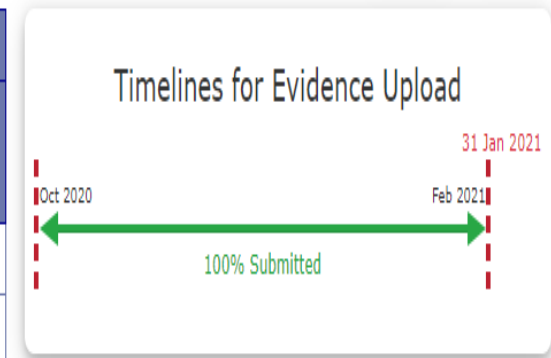
### Andhra Pradesh-State Reform Dashboard

Days Left -8

Admin Details

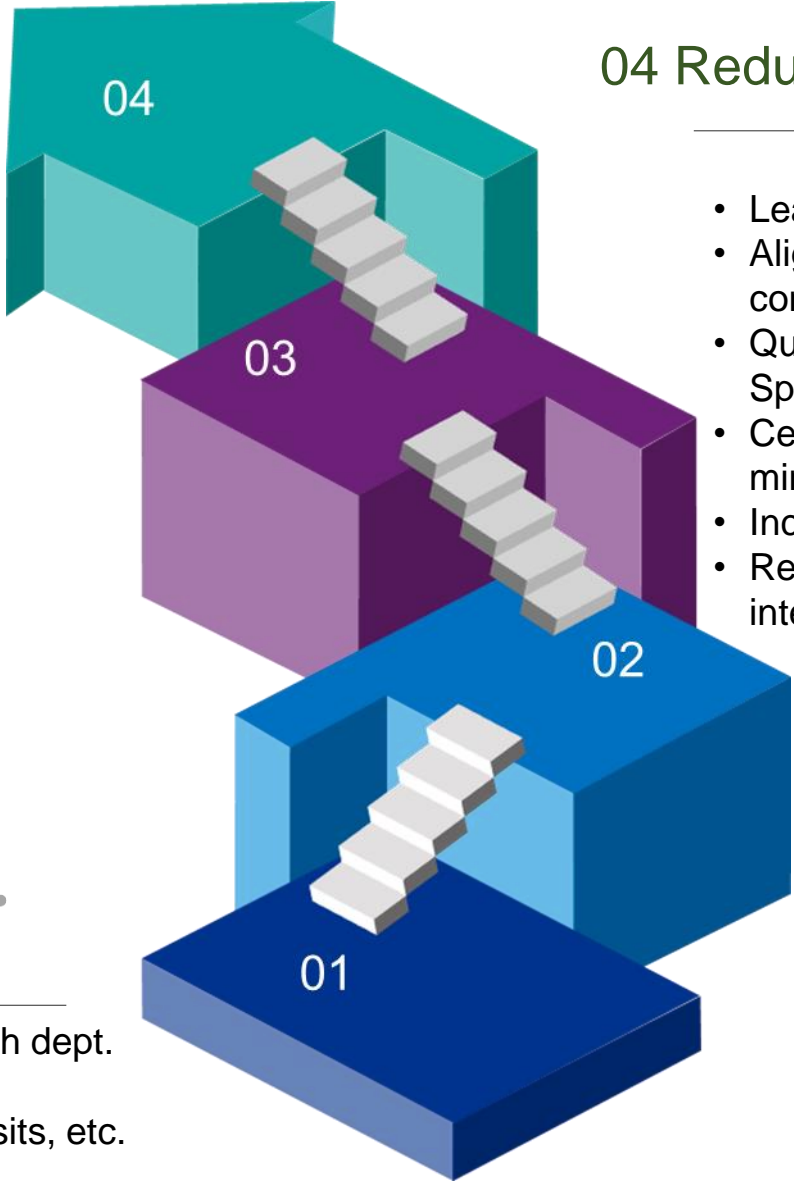
Total Reform Count: 301

Category	Submitted : 301				Not Submitted
	Evaluated	Not Evaluated	Pending Clarification	Rejected	
Count	1	299	1	0	0
Percentage	0	99	0	0	0





# Going beyond Ease of Doing Business



## 03 Minimizing Cost of Doing Business



- Skill development
- Technology enablement
- Multimodal logistic parks
- Plug & play
- Rationalization of fees

## 01 Before Ease of Doing Business



- In-person application submission at each dept.
- Regular visits to offices for follow-ups
- Payments through challans, bank deposits, etc.
- Low information availability
- Non-transparent processes

## 04 Reducing Risk of Doing Business



- Lease cum buy model to minimise risk of capital
- Alignment of **Relationship Mangers** to ensure setting up compliance with all requirements
- Query and Grievance redressal mechanism (Industries Spandana)
- Centralized land encumbrance information systems to minimize capital risk (GIS System)
- Incentives aimed to minimise investment risks
- Reforms in compliance inspection to reduce risk of interruption in operations

## 02 Ease of Doing Business



- Business Process re-engineering
- Time bound service delivery
- No physical touchpoints
- Online payments
- Availability of SOPs, timelines, fees etc. in public domain
- Online status tracking of application
- Reliable and transparent online systems





# Handlooms – YSR Nethanna Nestham



YSR Nethanna Nestham Cheque Distribution 2020



Hon'ble Chief Minister interaction with weavers



YSR Nethanna Nestham Cheque Distribution 2019



Hon'ble Industries Minister at the launch of Nethanna Nestham



# Marquee Investments in Electronics



At Dixon Technologies EMC-2 Tirupati



With Mr Sunil Vachani, Dixon Technologies



Dixon Technologies Unit at EMC-2 Tirupati



Wingtech Factory EMC -1, Tirupati



Wingtech Factory EMC-1, Tirupati



# YSR EMC: An Ideal Investment Destination for Electronics Manufacturing

“YSR EMC is the first to be approved by Govt. of India under EMC 2.0 scheme and offers best in class infrastructure coupled with incentives up to 100% FCI to companies.”



**35,000+**  
Potential Employment



**USD 1 Billion +**  
Potential Capital Inflow



KOPPARTHY, KADAPA

## YSR EMC, Kopparthi, Kadapa District

### Land Available



500 acres of dedicated land for EMC

### Nearest Cities

Tirupati	148 km
Bangalore	244 km
Chennai	260 km

### Connectivity

#### Strategically Located

	Kadapa Airport	6 Km
	Krishnapatnam Port	200 Km
	Chennai Port	260 Km
	National Highway NH 716	11 Km

### Project Highlights



Part of proposed Kopparthi Node of the Visakhapatnam Chennai Industrial Corridor (VCIC) and Tirupati Kurnool Industrial Corridor



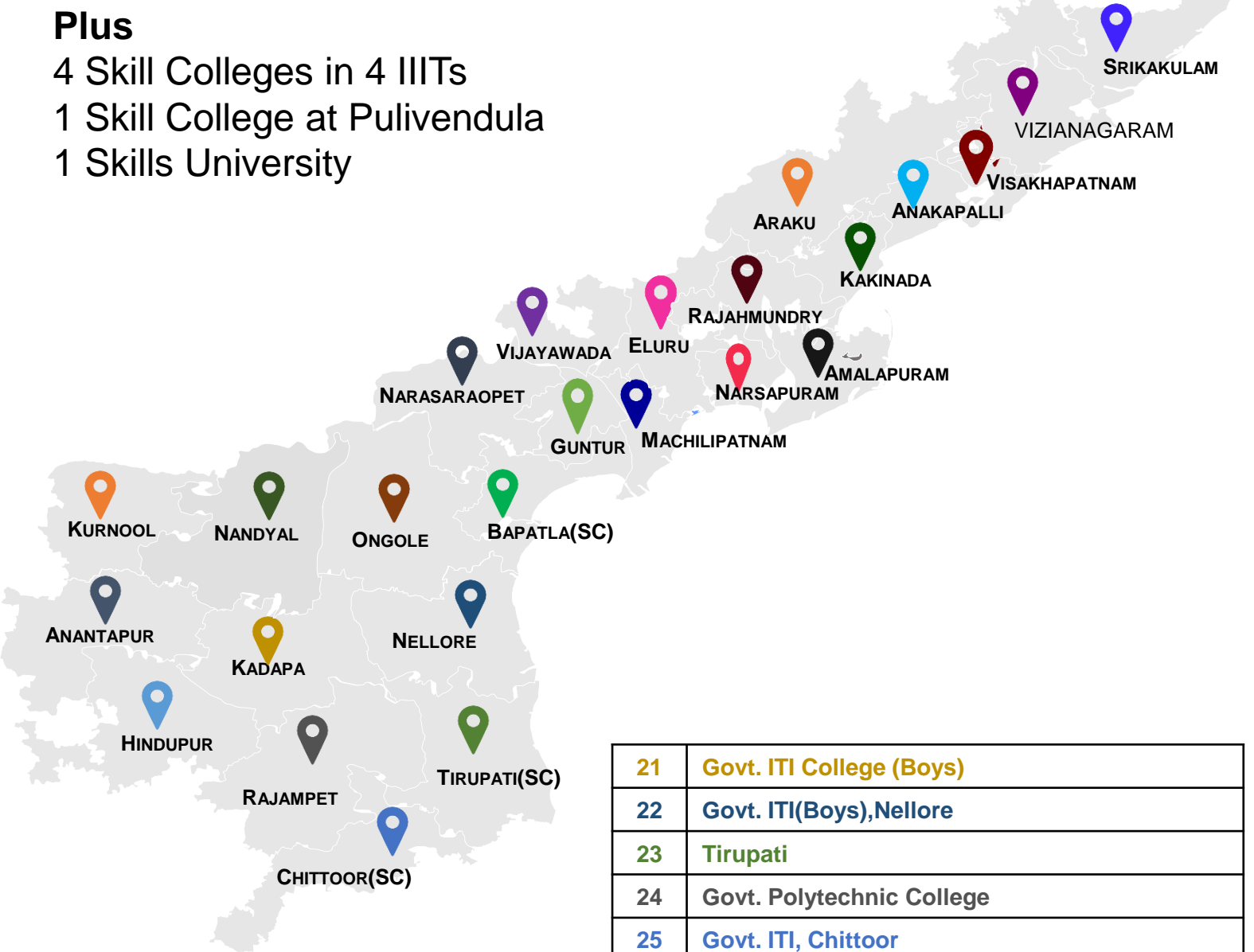
Adjacent to upcoming Multi Modal Logistics Park in 400 acres and Mega Industrial park in 2,744 acres



# 25 Skill Colleges in Each Parliamentary Constituency

## Plus

- 4 Skill Colleges in 4 IITs
- 1 Skill College at Pulivendula
- 1 Skills University



21	Govt. ITI College (Boys)
22	Govt. ITI(Boys),Nellore
23	Tirupati
24	Govt. Polytechnic College
25	Govt. ITI, Chittoor

S#	List of Skill College – Constituency Wise*
1	GMR Polytechnic College, Paderu
2	Govt. Polytechnic College
3	Vizianagaram (IDRT)
4	Govt. ITI, Gajuwaka
5	Govt. Polytechnic College
6	Govt ITI. College
7	Amalapuram
8	DR. B.R Ambedkar Govt. Polytechnic College
9	Narsapuram
10	Govt. ITI, College
11	Krishna University
12	Govt. Polytechnic College
13	MBTS Govt. Polytechnic College
14	University College of Engineering (JNTUK)
15	Agriculture University
16	Govt. ITI(Boys), Ongole
17	Govt. ITI College, Dhone (IDRT)
18	Govt. ITI College (Girls), Thandrapadu
19	Govt. Polytechnic, Anantapur
20	Govt. Polytechnic College for Women

\*Tentative

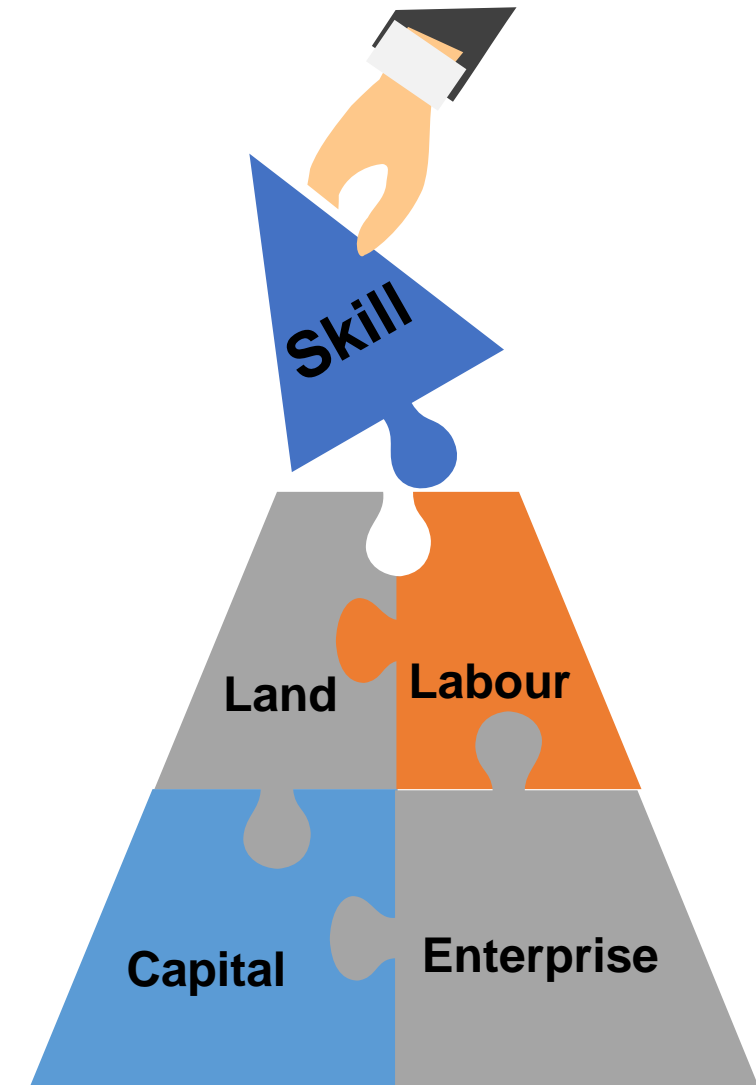
# Samagra Parishrama Survey: Mapping Industrial Demand

## Objectives & Status

- State Level L&M and MSME survey
- Creation of Unique ID - Parishram Aadhaar
- 55% Completed
- ~54,009 Units covered so far under Survey (~45,297 completed), expected to cover ~97,753 Units
- An effort of over 5 Departments, 600 Officers & 9,000+ Engineering Assistants/Ward Amenities Secretaries

- Easing of Regulatory Compliance
- Improved grievances resolvance mechanism
- Enhanced Capability to capture the industrial requirement / date like
  - Investments
  - EXIM
  - Labour
  - Skill Development requirements

## Outcomes





# Awards Galore for the State's Skilling Initiatives



## #1 STATE IN SKILLING Award by Assocham



# Strengthening Embassy and Trade through External Engagement

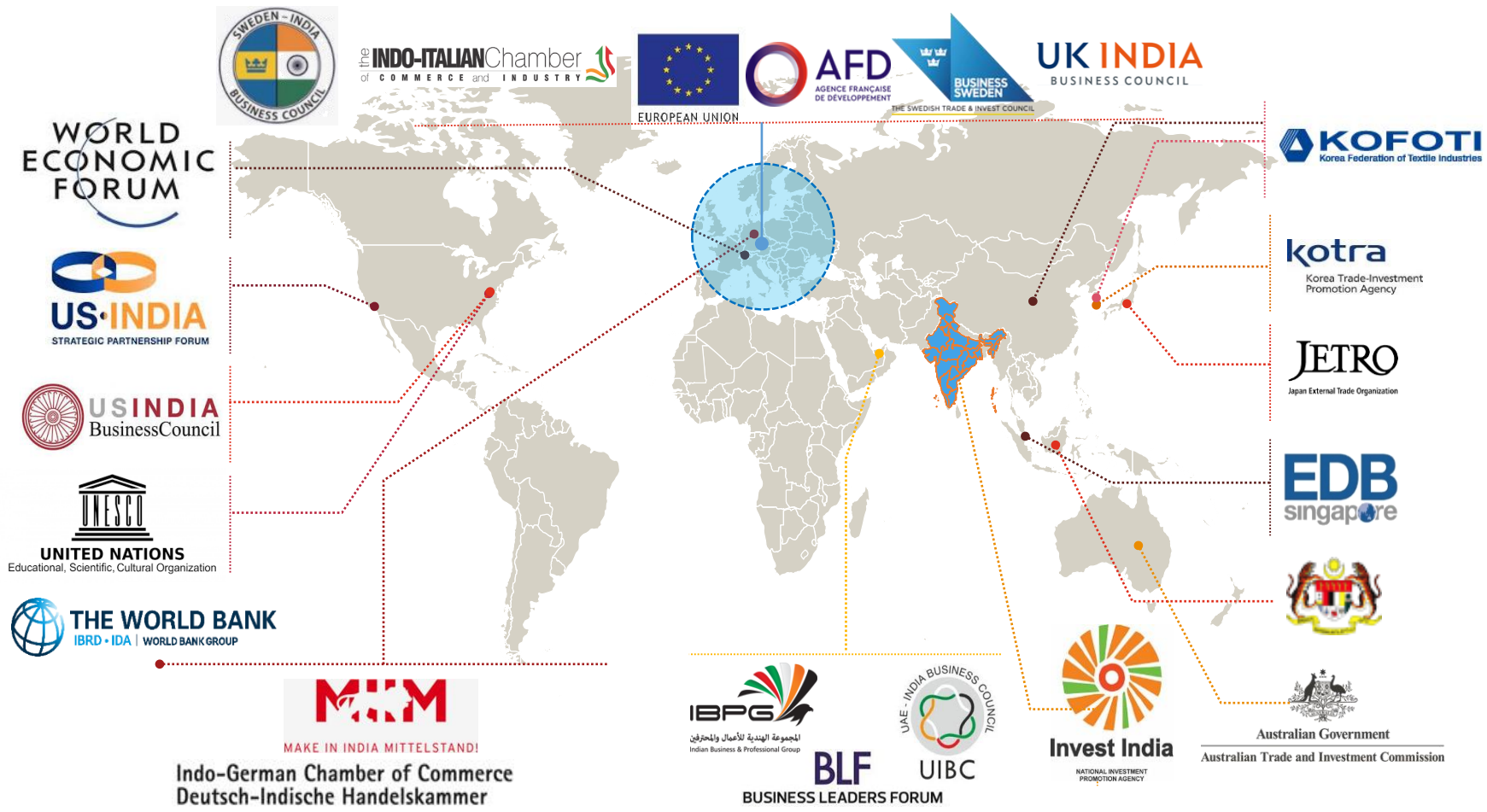
The APEDB is a nodal agency implementing objectives of the Taskforce Committee for engaging with foreign governments, embassies, multilateral & bilateral agencies, development banks and trade associations

International network with **25+** countries, through **30+** international trade bodies

## ACHIEVEMENTS

**30+** Embassy, Foreign Offices, In-bound delegation interactions, positioning AP globally

### Global Partners of APEDB



Current Country Engagements	Virtual Roadshows/ Diplomat Interactions	Planned Roadshows
Japan	9	October 2021
USA	5	November 2021
Taiwan	4	December 2021
Middle East	4	Early 2022
South Korea	3	December 2021
Italy	2	Early 2022
France	2	Early 2022
Australia	1	Early 2022
Kuwait	1	Early 2022

**Engagements in pipeline** – Canada, Israel, Singapore, Vietnam, Thailand, Indonesia, Philippines, Sweden, Germany, UK, Spain, Belgium, Norway, Denmark, Netherlands



# Diplomatic Outreach for Improving Trade and Commerce



Israeli ambassador Ron Malka



US Consul General Joel Reifman



Masayuki Taga, Consul General Japan



Barry O'Farrell, Australia High Commissioner



Andrew Fleming, British Dy High Commissioner



Kwon Young Seup, Consul General of South Korea



German General Christina Maria



Ms. Nicole Girard, Consul General Canada

# Diplomatic Outreach



Mr. Ben Wang, Director General TECC



Geoffrey Roux de Bezieux, President MEDEF



Diplomatic Outreach Event 2019



Asein Isaev, Ambassador of the Kyrgyz Republic



Adam Burakowski, Ambassador of Poland



High Commissioner Botswana



Ms. Sripriya Ranganathan, Indian Ambassador to South Korea



# Diplomatic Outreach and Investment Roadshows

**15** Ministerial-led national and international investment roadshows  
**20+** Sector-specific virtual roadshows  
**75+** CEO, Embassy, In-bound delegation interactions



**LAUNCH OF DIPLOMATIC OUTREACH PROGRAM – AUGUST 2019**



**VISIT TO USA – AUG 2019**



**HONORARY CONSUL GENERAL OF SOUTH KOREA, JEONG DEOK MIN**



**MR. GEOFFROY ROUX DE BEZIEUX, CHAIRMAN, MEDEF**



**LAUNCH OF AP BRANDATHON – OCT 2019**



**AUTOEXPO, NEW DELHI – FEBRUARY 2020**



**AP DELEGATION VIST TO SAUDI ARABIA – FEBRUARY 2020**



**DEFEXPO INDIA, LUCKNOW – FEBRUARY 2020**



**WEBINAR WTH JICA, JBIC, JETRO, METI – JULY 2020**



**TAIWANESE INDUSTRY ROUNDTABLE WITH DG, TECC – NOV 2020**



**TAIWAN REPRESENTATIVE TO INDIA, TECC – JANUARY 2021**



# Investment Outreach



HCM Laid Foundation Stone For Apache Leather Industry



HCM At US India Business Council Conference



At WEF's India Economic Summit, Oct 2019



WEF's Global Technology Governance Summit, Apr 2021



Deccan Dialogue, ISB, Aug 2019



US India Defence Ties Conference – Dec 2019



# Investment Outreach - HCM's visit to USA



Hon'ble Chief Minister addressing the Indian Diaspora at Chicago in August 2019



# Outreach Activities



Toray Industries Inauguration at Sri City



Interaction with a student at the skilling centre in Visakhapatnam



CXO interaction at Sri City



Visit to VRV Cryogenics India Pvt Ltd at Sri City

# Outreach Activities



Meeting with Mr. Anand Stanley, MD Airbus India



Mr Benoit Dussaugue, H.E Mr Emmanuel Lenain, Lt Gen JK Sharma (Retd.), Mr Anand Stanley



Mr Banmali Agrawala, President, Infrastructure and Defence & Aerospace at Tata Sons Private Ltd



Hon'ble Minister addressing the growing defence partnership between India and US



Hon'ble Minister at the US Defence CEO Round table



Meeting with Mr. Kishore Jayaraman, President, Rolls-Royce India & South Asia

# Outreach Activities



Honorable Minister's interaction with CEO of NITI Aayog Mr Amitabh Kanth



Hon'ble Minister's discussion with Sanjay Murthy, IAS, MD & CEO, DMIC, and Dr. Manish Kumar, MD & CEO, NSDC



Mr. Prasan Fisodia, Managing Director, Force Motors interacting with Hon'ble Minister



Hon'ble Minister addressing the CEOs & CXOs of various automobile & auto components Industry



Release of CII-Deloitte Report on "The Future of Mobility in India" by the Hon'ble Minister at Modern Automotive Technologies for Future Mobility Session



# Outreach Activities



Meeting with Mr. Baba Kalyani – Chairman & Managing Director, Kalyani Group



Mr. Venkataram Mamilapalle, CEO Renault interacting with Hon'ble Minister



Mr. Balendran, India Chief Representative, Great Wall Motors with Hon'ble Minister



Mr. Prasan Fisodia, Managing Director, Force Motors interacting with AP delegation



Hon'ble Minister's interaction with TATA Motors management.



Meeting with Mr Mahesh Babu – Head, Electric Vehicles, Mahindra

# Outreach Activities



Mana Palana Mee Suchana - 2020



IndiaChem 2021



Mana Palana Mee Suchana - 2020



UNIDO India Country Program (CP) flagship program launch in Visakhapatnam

# Outreach Activities



Meeting with Shri. Mansukh Mandviya, Minister of State for Ports, Shipping, Waterways, Chemicals & Fertilizers



Meeting with Shri. Piyush Goyal, Minister of Railways; Commerce & Industry; Consumer Affairs



Meeting with Smt. Smriti Irani, Union Cabinet Minister for Textiles and Women & Child Development



TechnoTex - 2021



Virtual Interaction with ISB team



# YSR AP One - End to End Business Facilitation Center

ADB has in-principle approved to fund the centres – one HQ and 9 at districts

## Entrepreneurship Facilitation Cell

Maintain repository of business models and plans and support aspiring entrepreneurs in the state with starting new venture

## Market Research Cell

Aims to undertake market research and develop sector wise resource repository

## Marketing & Branding Cell

Support businesses in marketing their products locally and globally

## Sales Support Cell

Connect units in state with potential buyers

## Scheme Support Cell

Aims to support units in state in availing central and state government schemes

## MSME Revitalization Cell

Proactively assess MSMEs and revive and reposition sick MSMEs, MSMEs are exempted from obtaining approvals for 3 years to start operations immediately

## Business Enablement Cell

Supports businesses in getting all approvals, improve access to credit and addresses all grievances

## Investor Outreach Cell

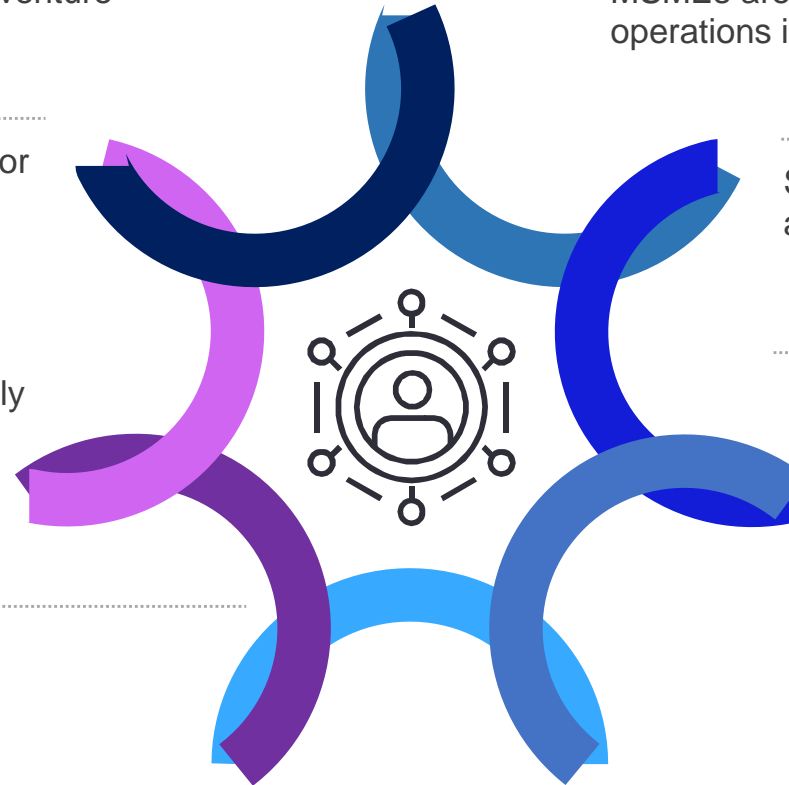
Works with priority sectors and geography desks for focus investor outreach

## Incentive Management Cell

Assess unit performance, estimate incentives and ensure timely disbursement of incentive

## Special Category Cell

Handhold SC/ST/BC/Minority entrepreneurs throughout the investor life cycle





**Thank You**